



FRESCO
RIZON
COLLECTION

Introducing FRESCO RIZON Collection

A New Dawn in DECORATIVE SURFACES

A standout from the Rizon Collection, the 200x200mm Fresco Rizon tile blends artistic charm with timeless form, **inspired by the rising light of the horizon**. Each compact tile features rich detail and soulful patterns, turning walls and floors into warm, story-filled galleries where art and surface meet.

Size: 200x200mm

No. of Concept	No. of Series	No. of Effect
50	06	03

Designed Exclusive for
'FRESCO' Segment



FRESCO
RIZON
COLLECTION



FRESCO
RIZON
COLLECTION

SERIES

● HYUSORA

● RUG

● WALLPAPER

● MOROCCAN

● DECOR

● POSTER

Surface : **Matt**

Effects : **MT Granules | GL Granules | Carving**

APPLICATION AREAS -



Residential
(Living Room, Bedroom, Kitchen)



Indoor Area



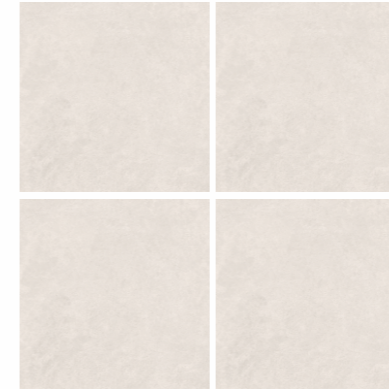
Balcony



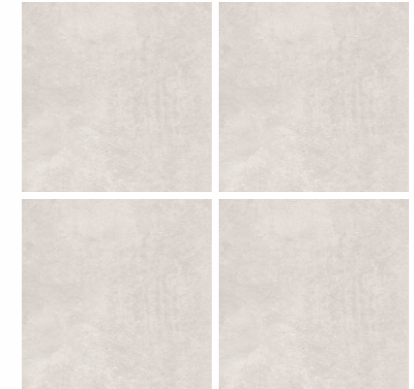
Bathroom



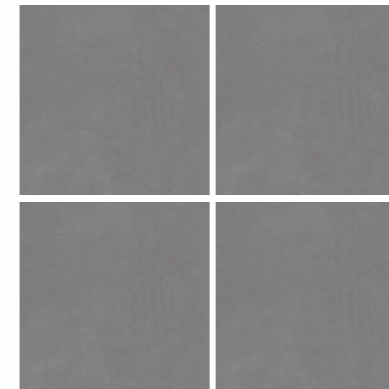
Offices



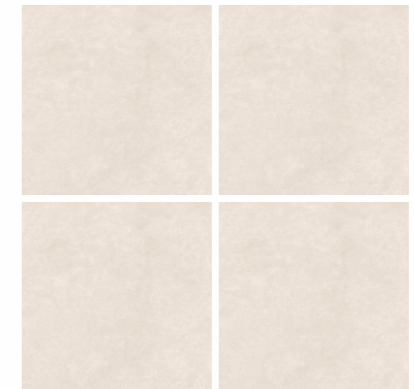
Hyusora Bliss



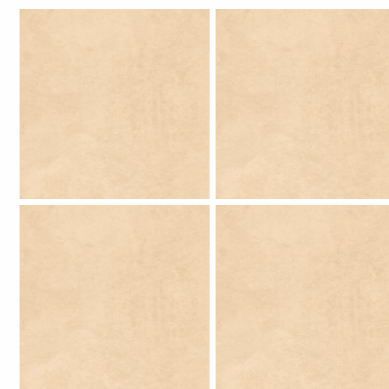
Hyusora Calm



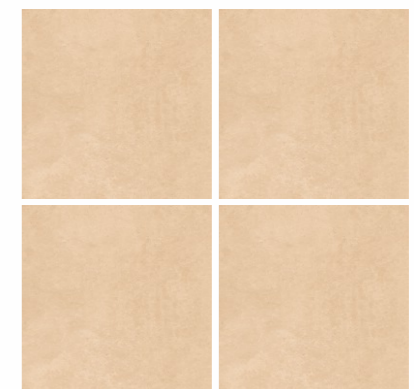
Hyusora Drift



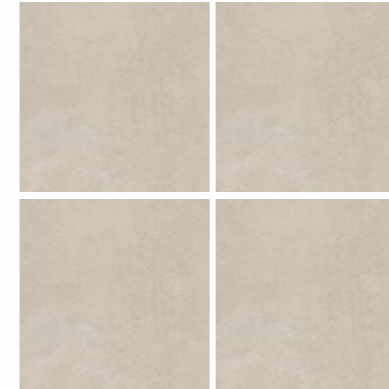
Hyusora Glow



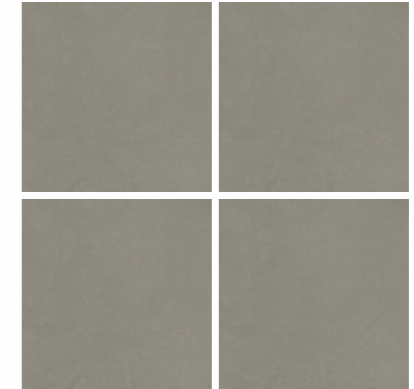
Hyusora Hush



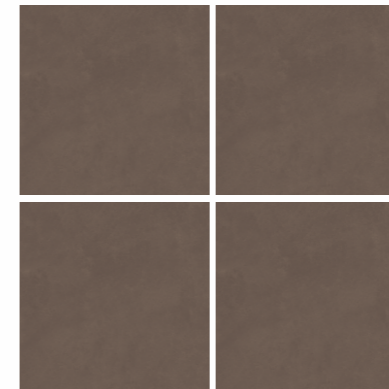
Hyusora Ease



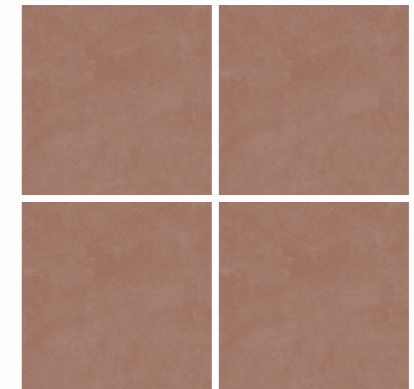
Hyusora Lush



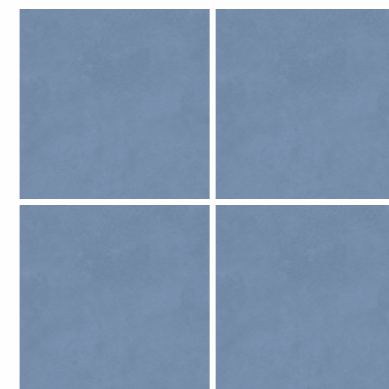
Hyusora Hope



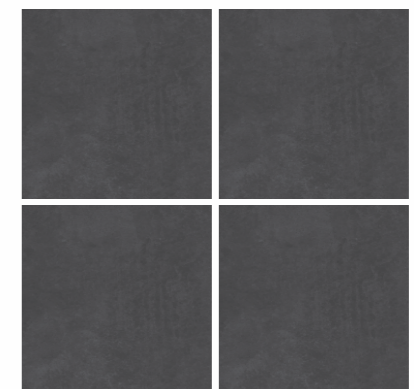
Hyusora Whimsy



Hyusora Muse



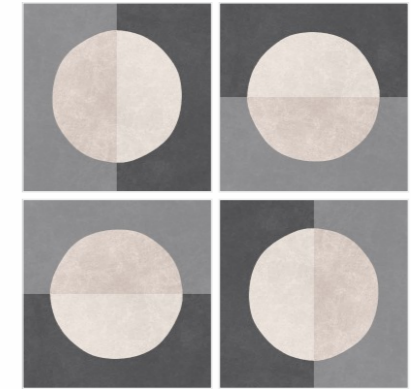
Hyusora Serenity



Hyusora Charm



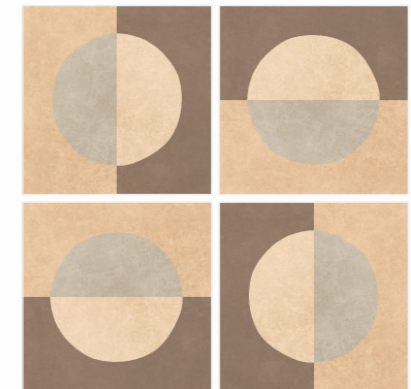
African Ivor (Glossy Granules)



Sphere Classic (Glossy Granules)



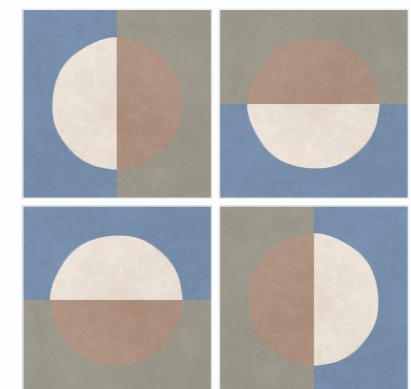
African Sage (Glossy Granules)



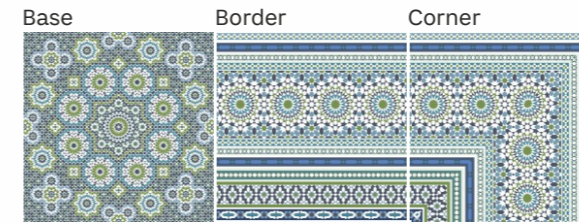
Sphere Heritage (Glossy Granules)



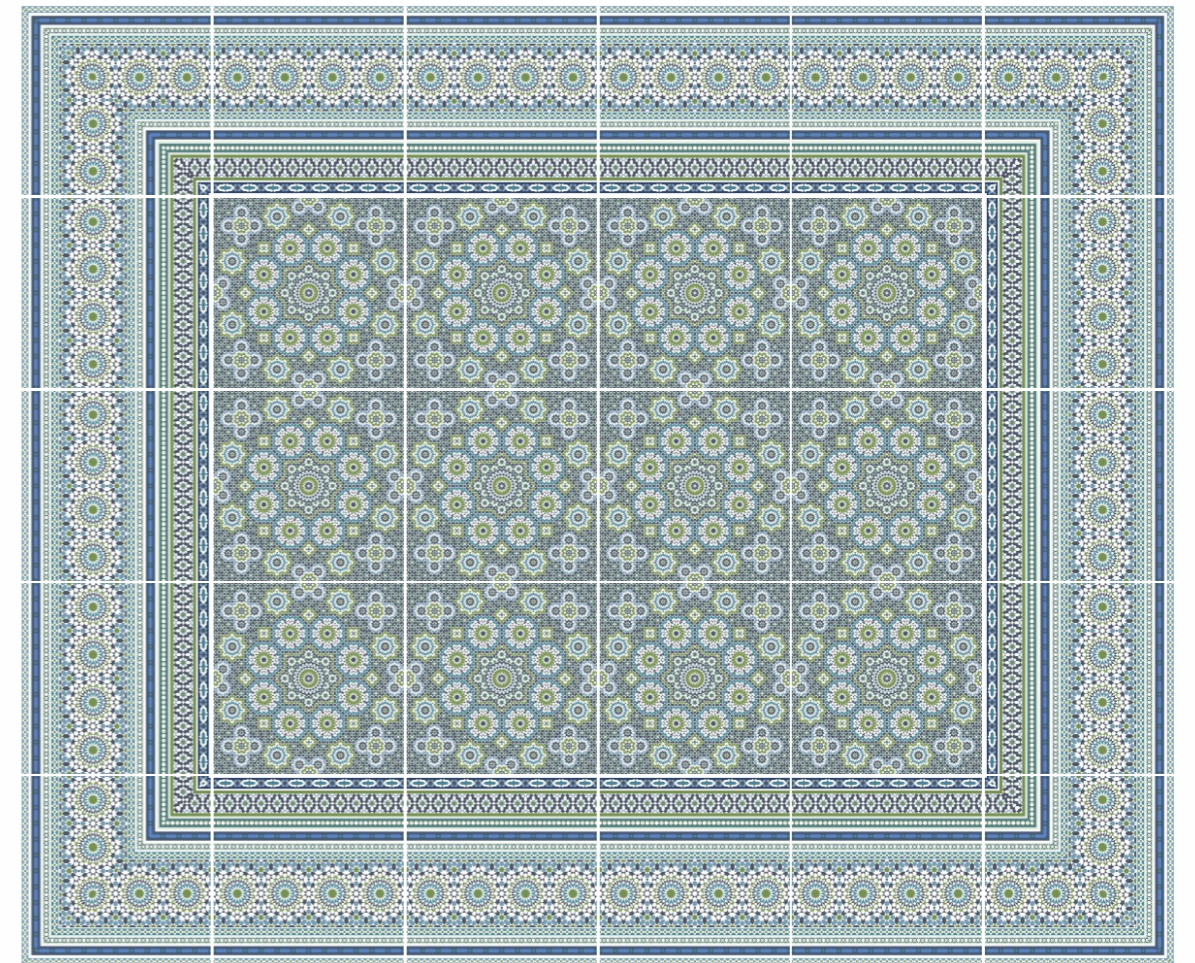
African Myst (Glossy Granules)

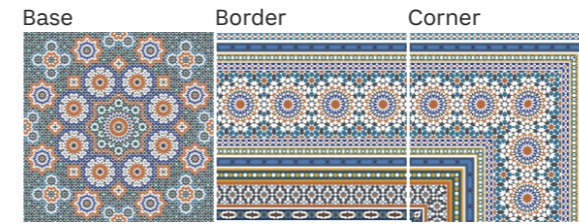


Sphere Morden (Glossy Granules)

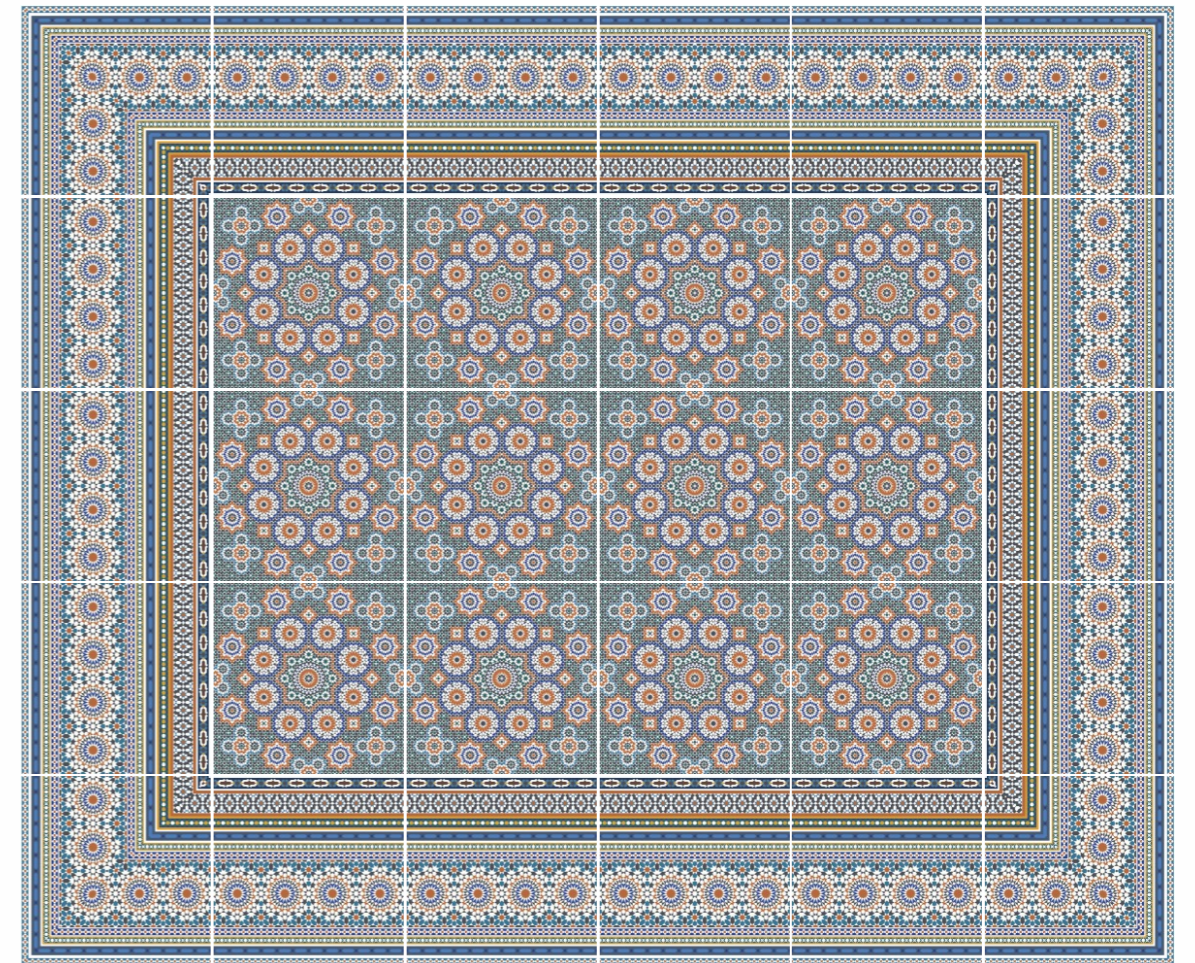


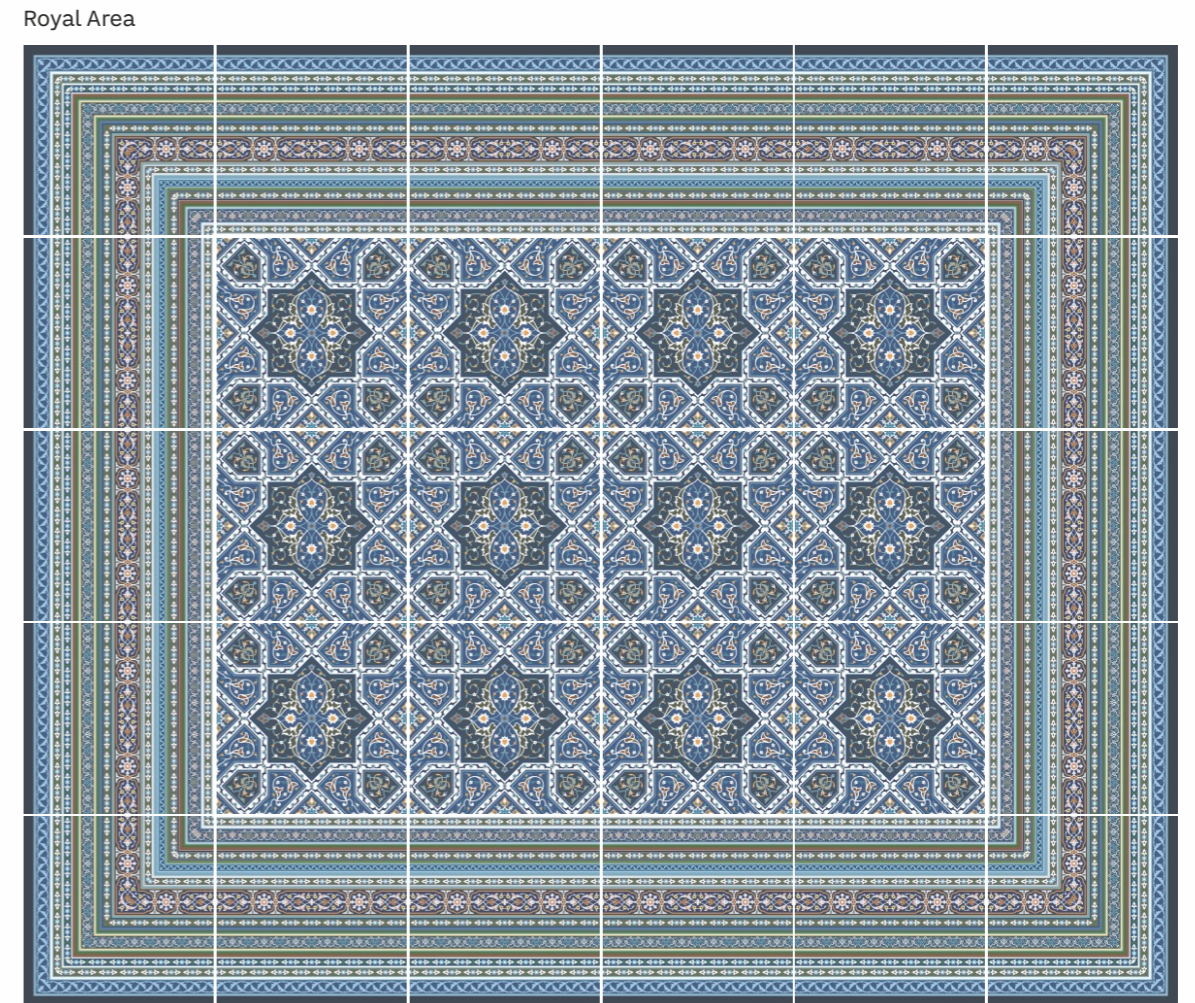
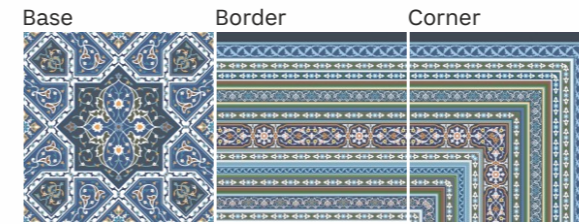
Caliph Pearl (Carving)

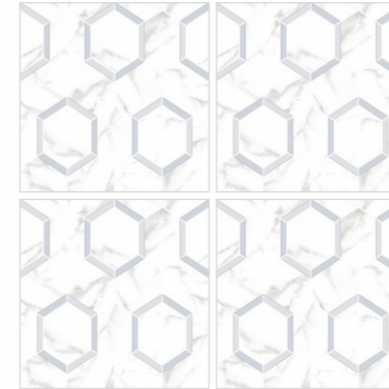




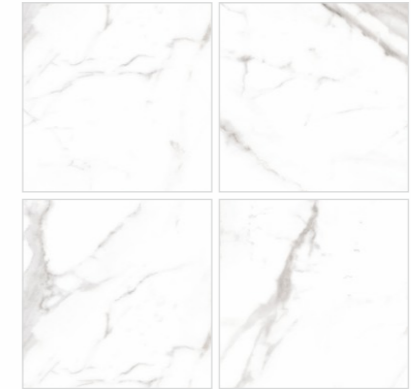
Caliph Gem (Carving)



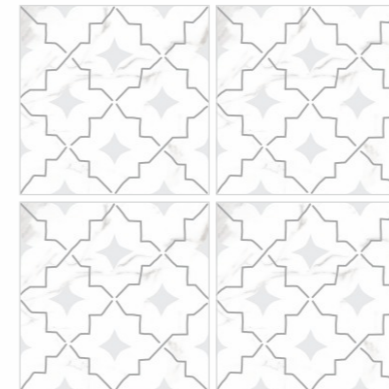




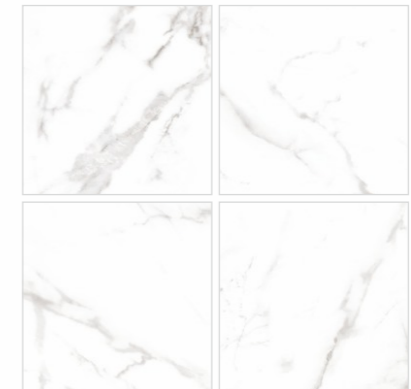
Marmoblanc Hexa (Glossy Granules)



Marmoblanc
 Random - 10



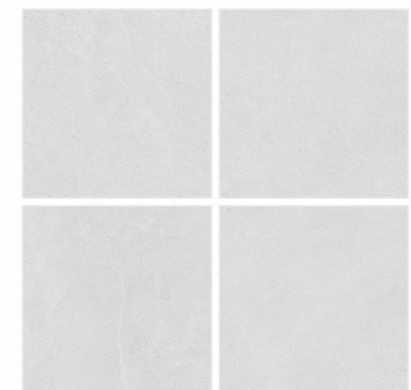
Cosmahal White (Glossy Granules)



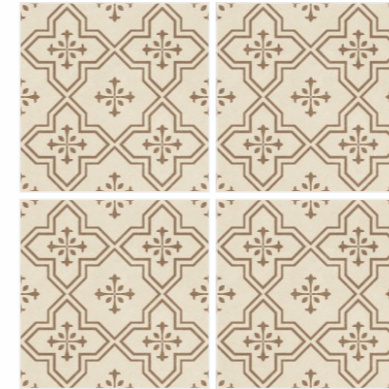
Marmoblanc
 Random - 10



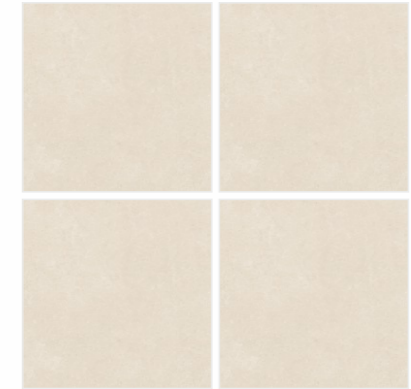
Rosedust Tropica (Matt Granules)
 Random - 04



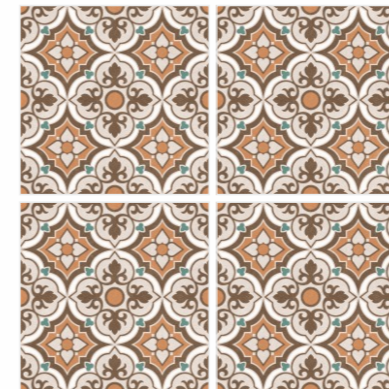
Rosedust
 Random - 24



Coco Angle (Glossy Granules)



Coco
Random - 04



Browny Curve (Glossy Granules)



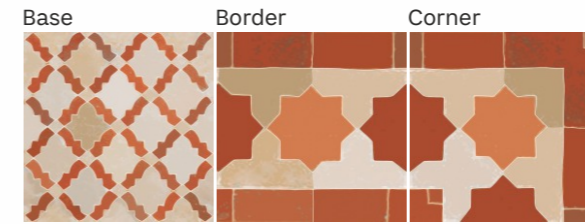
Browny
Random - 03



Flora Aloe (Glossy Granules)

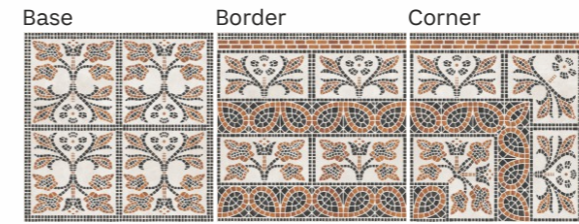


Flora
Random - 08

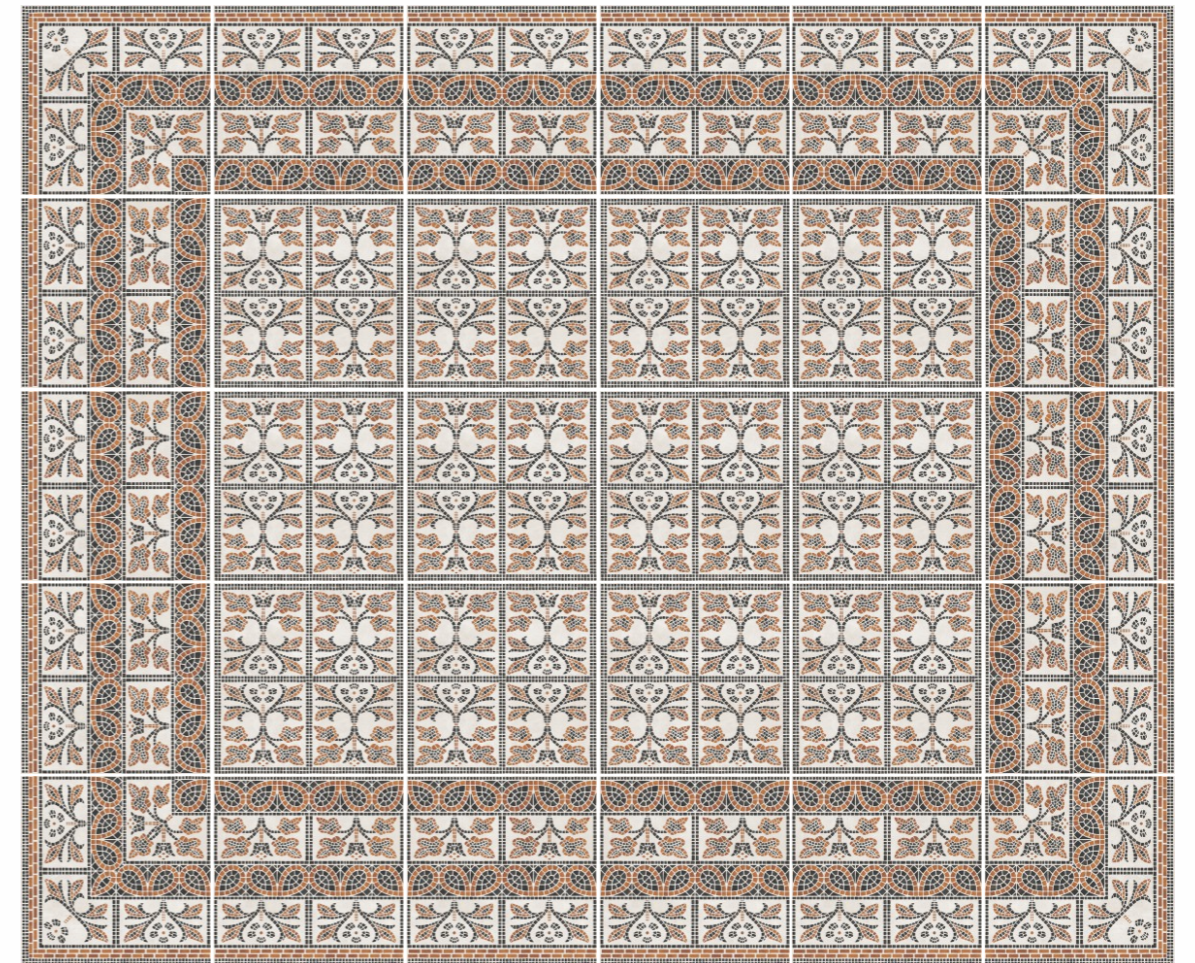


Waxterra (Matt Granules)



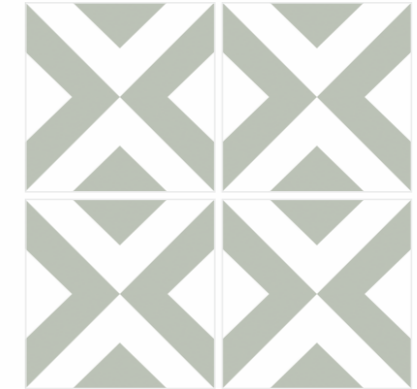


Mosaico Terra (Glossy Granules)





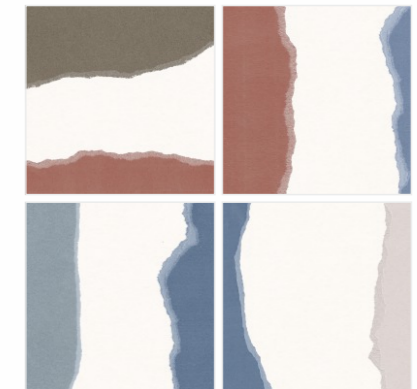
Morocco Sea (Carving)
 Random - 06



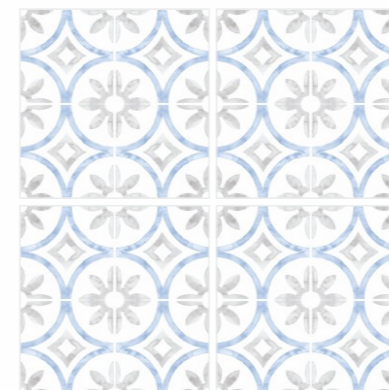
Sage Cross (Carving)



Morocco Terra (Carving)
 Random - 06



Flaggy Joy (Carving)
 Random - 08



Watero Coal (Glossy Granules)



Abstraculer (Glossy Granules)
 Random - 04



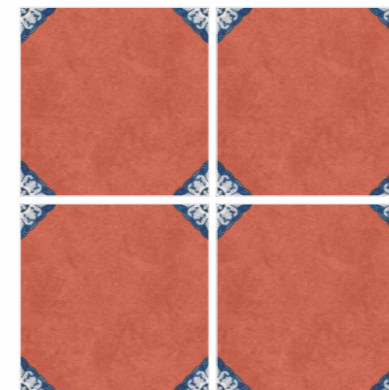
Home Garden (Glossy Granules)
 Random - 06



Punto Lustra (Glossy Granules)



Lava (Glossy Granules)
 Random - 12



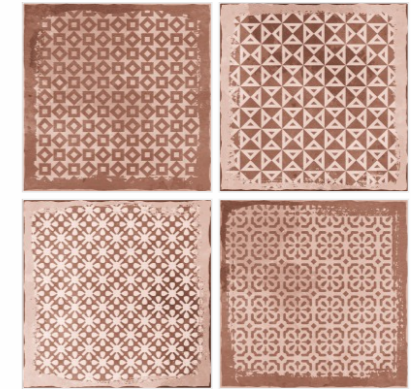
Terra Vitrosa (Glossy Granules)



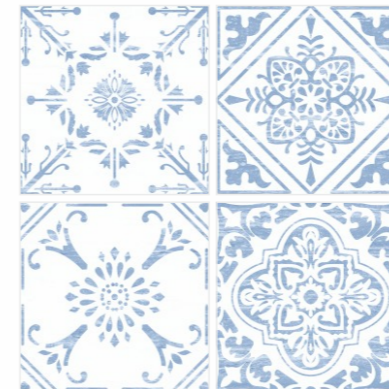
Matria (Glossy Granules)
 Random - 06



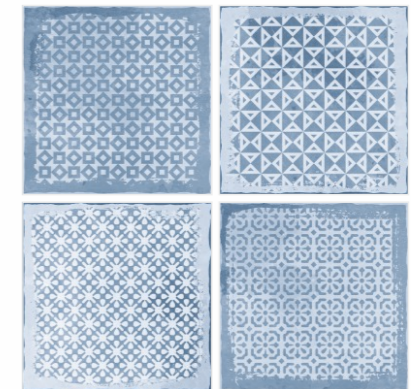
Crysta Ash (Glossy Granules)
 Random - 06



Emerge Mud (Glossy Granules)
 Random - 08



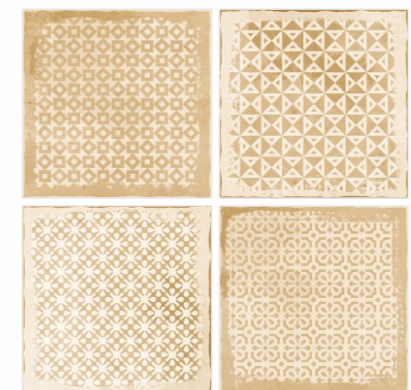
Crysta Ink (Glossy Granules)
 Random - 06



Emerge Sky (Glossy Granules)
 Random - 08



Crysta Trunk (Glossy Granules)
 Random - 06



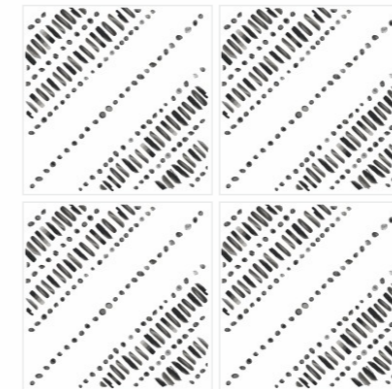
Emerge Terra (Glossy Granules)
 Random - 08



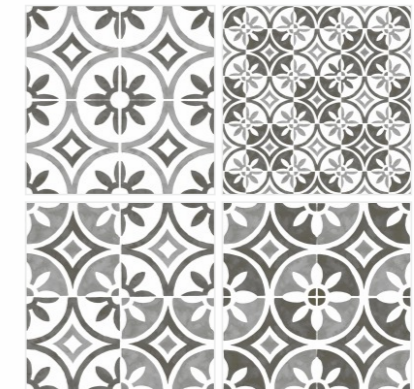
Espana Sea (Glossy Granules)
 Random - 08



Espana Soil (Glossy Granules)
 Random - 08



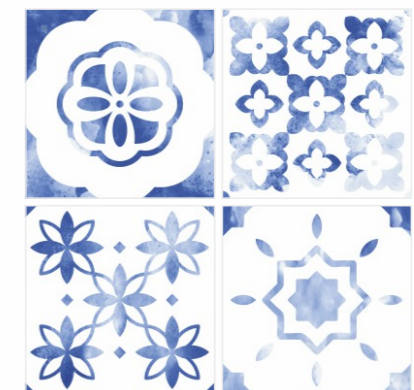
Gem Noir (Glossy Granules)



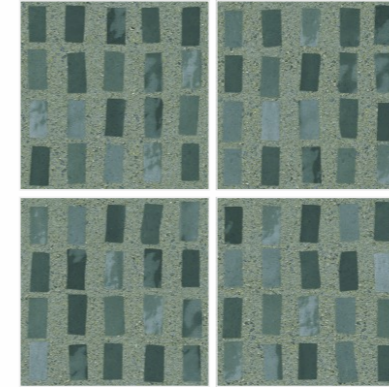
Black Pearl (Glossy Granules)
 Random - 04



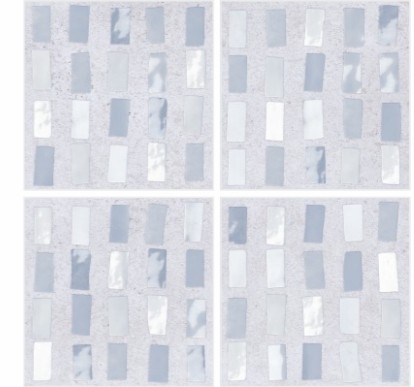
Boxy Teal (Glossy Granules)



Euro Ink (Glossy Granules)
 Random - 06



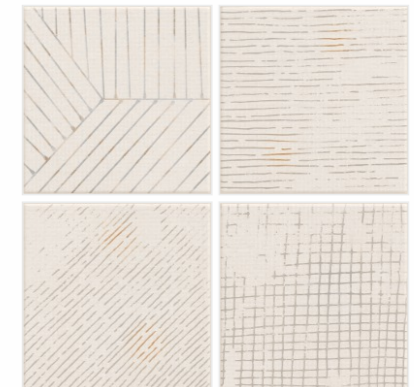
Jellyblock Aloe (Glossy Granules)
 Random - 04



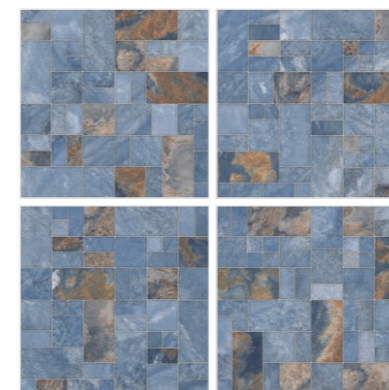
Jellyblock Myst (Glossy Granules)
 Random - 04



Linea Warm (Glossy Granules)
 Random - 09



Linea Neutral (Glossy Granules)
 Random - 09



Marmosaic Azzure (Glossy Granules)
 Random - 04



Marmosaic Bianco (Glossy Granules)
 Random - 04



Orna Cement (Glossy Granules)
 Random - 04



Orna Brick (Glossy Granules)
 Random - 04



Pavilion Bliss (Glossy Granules)
 Random - 12



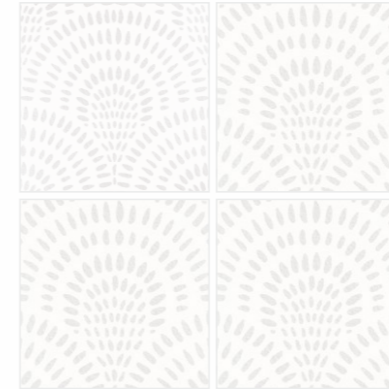
Rabat Squares (Glossy Granules)
 Random - 25



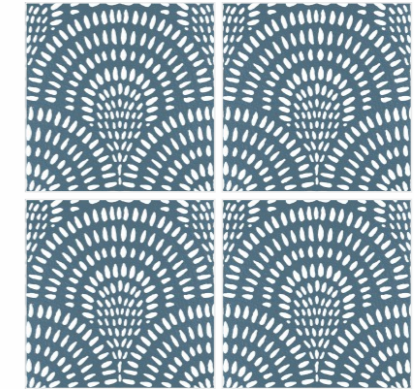
Persian Teal (Glossy Granules)
 Random - 04



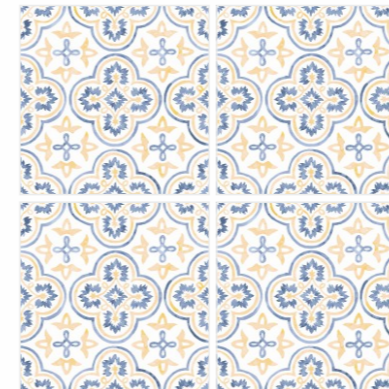
Sketch Pen (Glossy Granules)
 Random - 16



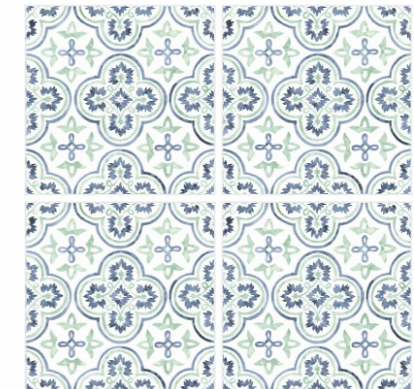
Shell Ice (Matt Granules)



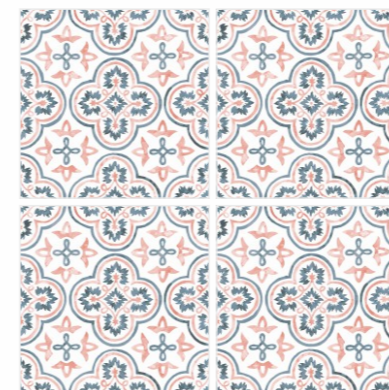
Shell Aqua (Matt Granules)



Sharpen Bisque (Matt Granules)



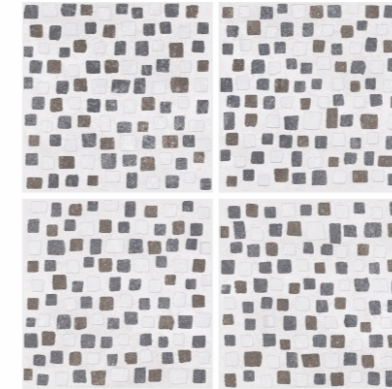
Sharpen Sage (Matt Granules)



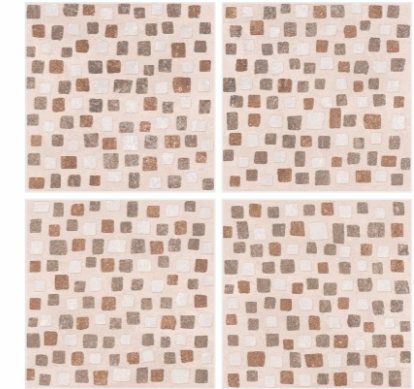
Sharpen Rose (Matt Granules)



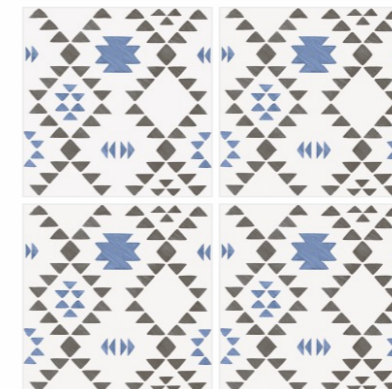
Brickline (Matt Granules)
 Random - 06



Squable Moon (Matt Granules)
 Random - 04



Squable Sun (Matt Granules)
 Random - 04



Toran Blue (Matt Granules)



Toran Brown (Matt Granules)



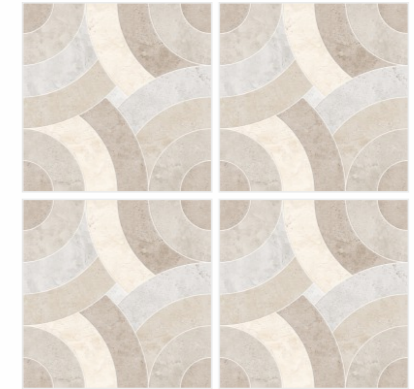
Tokyo Sweet (Matt Granules)
 Random - 04



Warm Tempo (Matt Granules)
 Random - 06



Ventine Motif (Carving)
Random - 04



Crostine Motif (Glossy Granules)



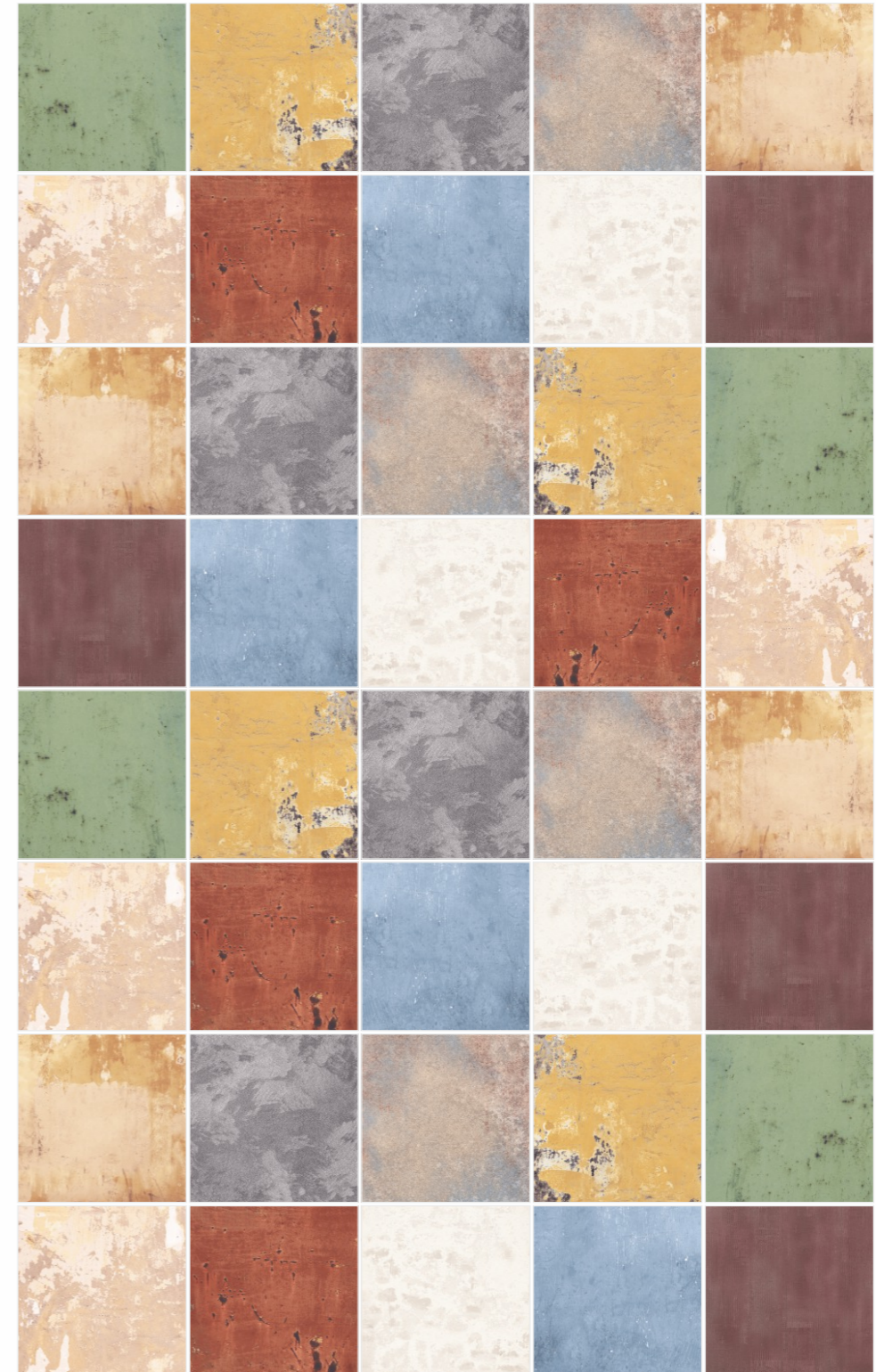
Cronyx Motif (Glossy Granules)



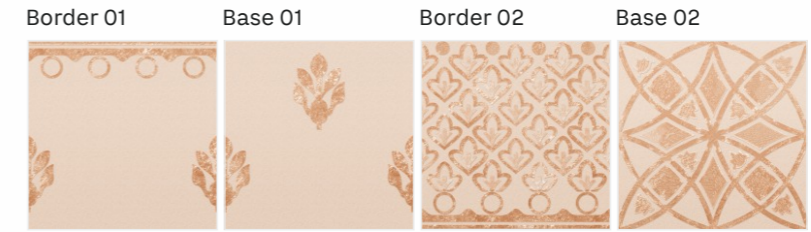
Venyx Motif (Glossy Granules)
Random - 02



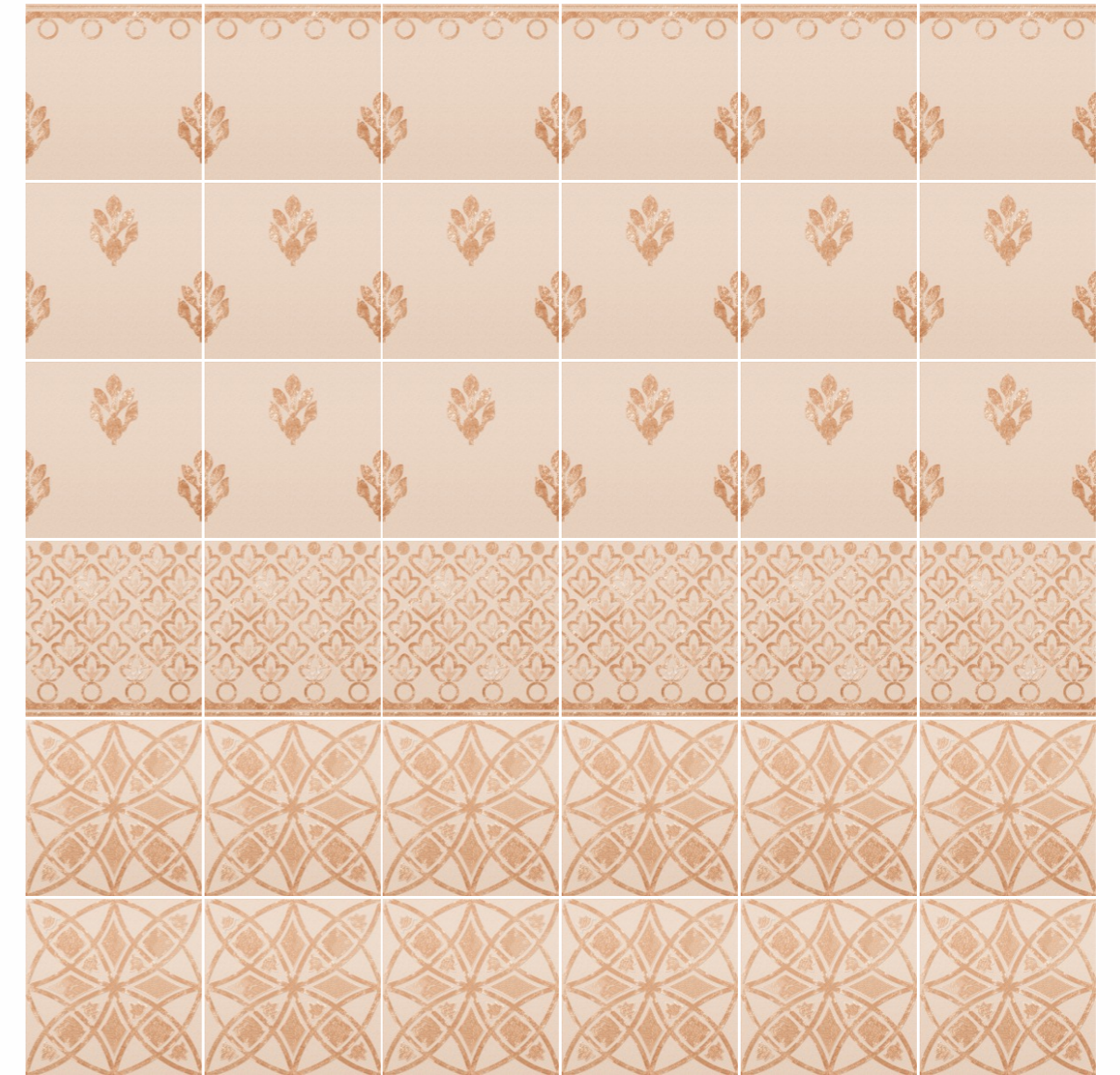
Wallrust



Random - 10



Jewel Gold (Glossy Granules)





Jim Corbett (Glossy Granules)



Random - 36

Fresco Rizon Collection | 200x200mm

Characteristics	Verdict	Requirement as per IS 15622:2017 Gr Bla E ≤ 0.08%	AGL Value	Test Method
-----------------	---------	---	-----------	-------------

(A) DIMENSION & SURFACE QUALITY

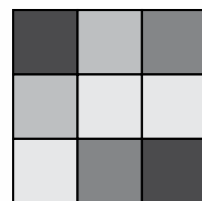
Deviation In Length & Width	PASSED	± 0.1%	± 0.1%	IS 13630 Part-1
Deviation In Thickness	PASSED	± 5.0%	± 3.0%	
Straightness of Edge	PASSED	± 0.1%	± 0.1%	
Rectangularity	PASSED	± 0.1%	± 0.1%	
Surface Flatness	PASSED	± 0.5%	± 0.20%	
Surface Quality	PASSED	Min 95% free from visible defects	> 95% free from visible defects	

(B) PHYSICAL & THERMAL PROPERTIES

Water Absorption % By Wt.	PASSED	0.08 <E ≤ 3%	< 3.0%	IS 13630 Part-2
Flexural Strength (MOR) In N/mm ²	PASSED	Avr.30 N/MM ² Ind 27 N/MM ²	>27N/MM ²	IS 13630 Part-6
Breaking Strength in N	PASSED	Min 1100 N	>1200 N	IS 13630 Part-6
Bulk Density (gm/cc)	PASSED	Min. 2.0	>2.0	IS 13630 Part-2
Impact Resistance	PASSED	0.55 Min	0.55	IS 13630 Part-14
Resistance to Surface Abrasion	PASSED	Class II Min.	Class III Min.	IS 13630 Part-7
Thermal Shock Resistance	PASSED	10 Cycles Min.	Passed 10 Cycles	IS 13630 Part-5
Moisture Expansion in mm/M	PASSED	0.02MM/M	Nil	IS 13630 Part-3
Crazing Resistance	PASSED	4 Cycles at 7.5 bar Min.	Passed The Test	IS 13630 Part-9
Frost Resistance	PASSED	Resistance	Resistance	IS 13630 Part-10
Mohs Scratch Hardness	PASSED	Min. 5	Min. 5	IS 13630 Part-13

(C) CHEMICAL PROPERTIES

Resistance To Household Chemicals	PASSED	Min. Class AA	Class AA	IS 13630 Part-8
Resistance To Acids & Alkalis (Except HF Acid)	PASSED	Min. Class AA	Class AA	
Stain Resistance	PASSED	Min. Class 1	Class - 1	



Kindly note that variations in colour and size are natural characteristics of vitrified tiles, resulting from the random design concept and vitrification process. These should not be regarded as manufacturing defects. It is highly recommended to inspect actual tile samples prior to making a final selection. A 2 mm gap must be maintained during installation, and a dry mock installation is advised to ensure precision. Post-installation claims will not be accepted. Catalogue or Digital visuals, product sizes, and colours are indicative and subject to change without prior notice. We take pride in being part of your space and are dedicated to your lasting satisfaction.

DEGREE OF
COLOUR CHANGE

HIGH SHADE AND TEXTURE VARIATION
WITHIN EACH CARTON

NOTES &
RECOMMENDATION

NOTES

- All Technical Specifications in This Catalogue are for Premium Grade Material only.
 - SHADE/SIZE VARIATION are inherent characteristics to ceramics. Certain products purposely have variations which are part of design & process. The same have been indicated.
 - It is recommended to blend tiles by mixing tiles from various boxes & check for natural hue before fixing the tiles.
 - It is recommended to check the tiles before laying/fixing. Quality standards cover 1st/Premium Quality only.
 - Company's liability is limited on material that has not been laid.
 - NO COMPLAINT SHALL BE ENTERTAINED ON TILES ALREADY FIXED/LAID.
 - The liability is also limited to the material supplied by the company; no other claim is entertained under any circumstances.
 - No complaint is entertained on decoration done on tiles, other than the ones done by Asian Granito India Ltd.
- GENERAL NOTE : Any complaint must be brought to the company's notice within 10 days of purchase & before fixing of tiles.

How to avoid defects & complaints :

- Use Premium Quality Tiles
- Select tile sizes that are adaptable to the space, prioritizing the area dimensions rather than just the intended use.
- Avoid careless laying of Tiles
- Avoid poor maintenance-for instance, by cleaning with strong Chemicals or with abrasive equipment e.g. metallic scrubber
- Always keep Tiled area clean & ensure dusting/mopping regularly
- Put Doormats/Foot-mats at all strategic locations to avoid loose debris/dust from entering the Tiled area

List of Detergents For Removal of Stain

STAIN (Created By)	Beer	Blood	Calcar	Cement	Cigarette	Soft Drinks	Coffee	Edible Oil	Glue	Ice Cream	Ink	Juices	Marker Ink	Nicotine	Paints	Resin	Rust	Tar	Tea	Turmeric	Wine	
SOLVENTS (Turpentine, acetone, trichloroety - line etc.)								•	•		•		•			•			•			
SODIUM HYPO (Chlorite (NaOCL))												•								•		
ACIDS DILUTED (Hydrochloric acid*)			•	•	•						•			•	•		•			•		
ALKALI (Sodium hydroxide/potassium hydroxide)	•	•				•	•			•												•

*Commercial grade shall not be used

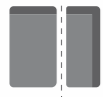
DISCLAIMER : Asian Granito India Ltd. reserves the right to delete & amend either totally or partially, any of the colors, shapes, sizes, references and other technical specifications contained in this catalogue at anytime. The colors shown of tiles in this catalogue are purely illustrative and limited to printing process. Please refer actual sample before final selection. The details of sizes, colors, references should be verified for typographical errors. All complaints need to be reported within 10 days of purchase. Always follow instructions to avoid complaint due to bad masonry.



HANDLING

- To prevent breakage, we recommended to keep all Large Format Tiles in their original packaging during handling.
- Tiles measuring 60x120cm or less can be handled by hand.
- To handle Large Format Tiles, we recommend to use lifting tools with a sufficient load capacity.
- The use of forklift is recommended; however, it has to be equipped with following fork details:

- Minimum length of 1.2 m if the crates are handled resting on the long side.
- Minimum length of 2.1 m if the crates are handled resting on the short side.
- It is recommended that you handle the Frame individually.



CUTTING

- When cutting Large Format Tiles, we recommend to use professional dry cutters. Using other tools may lead to uneven cuts or breakage of the material.

It is recommended to check the cutter blade before any cut. A damaged blade increases the risk of damage.



BLACKROUND / BASE / SCREED

- Prepare a screed with a perfectly flat, dry, compact, dust-free surface, with no cracks or other visible damage. The ideal height difference should be no more than 3 mm, measured using a 2 m spirit level.
- In case of slightly cracked or non-solid screed, it is recommended to use as crack preventing mat between substrate & slab. Screed should have suitable

hardness and mechanical resistance to stresses due to the final uses. It should be prepared using perimeter bands & all structural expansion joints as necessary.

- It should be according to BS 8204-1-2003 or DIN 18560 standards.



LAYING WITH ADHESIVES

- We recommend laying with this technique, which should be carried out by suitably qualified workers with appropriate equipment.
- While choosing the adhesive, we recommend you to bear in mind the following: type of Large Format Tiles (group to which they belong and size), type of surface to be tiled and intended use of room.
- Adhesive should be applied on the floor as well as on backside of tiles with 3-4 mm thickness.
- To make corrections, we recommend you to check the material before the adhesive dries.
- Adhesive will vary depending on the surface so follow manufacturer recommendation. Cementitious Adhesive (C2 Category - C2TES1) is recommended.
- Apply the adhesive onto the back of the slab with a 3 mm trowel and should be well distributed on corners & edges.

- It must be spread over in one direction only. Ideally it should be spread towards shortest direction of the tile.
- Spread the adhesive for one tile (pc) onto the floor substrate using a 15mm U-notch or a 10mm V-notch trowel and following the same direction as previously applied to the back of the slab. Adhesive should have 100% contact with tiles/substrate to avoid hollow sounding.
- It is recommended to start from the centre of the slabs and then move towards the edges.
- Tap the slab with a rubber mallet for a complete fixing ensuring the air is expelled.
- It is recommended to handle slabs with appropriate equipment.



JOINTS

- Deciding where to position the joints is also a part of the work which should be entrusted to qualified workers.
- The joints must be positioned:
 - On structural connections (structural joints)
 - Between the wall and the floor (perimeter joints)
 - Between one tile and another (laying joints or gaps)
 - Between tiles and other materials (e.g. pairings between ceramic, linoleum, or wood).

- A 2 mm joint spacer is suggested for all sizes.
- For Large Format Tiles, a 2 mm joint is strongly recommended, as well as proper positioning of spacers on floor sides.



USE OF TILE LEVELLING SYSTEM DURING THE INSTALLATION

- For optimum surface performances, it is strongly recommended to use a tile levelling system.

- This solution also acts as a spacer for joints, thus contributing to make the installation more accurate.



GROUTING

- We recommend you to use grout with the same colour as the product.
- We recommend you to wait for the adhesive to dry completely before grouting the joints.
- We also advise you to ensure there is no adhesive or dust in the joints.
- Apply the grout using rubber trowel.
- Both cement & epoxy grout can be used. It is not recommended to use grouting with coloured pigments in contrast with colour of tiles.
- We recommend you to grout no more than 4-5 square metres of tiling at a time. This applies in particular when laying textured, non-slip and polished tiles.

- You are advised to remove all excess grout from the tile surface while the grout is still wet, working in diagonal movements. This applies in particular to tiles laid in outdoor areas.
- Use a damp sponge and perfectly clean water to thoroughly clean the entire tiled surface and the joints.
- We then recommend that you dry the surface with a damp cloth.
- Considering how quickly epoxy grouts set, if these are used, we recommend you to clean the excess grout immediately with a sponge and plenty of water.
- On the day after grouting, you should give the laid tiles a second cleaning with alkaline detergents.



CLEANING AFTER LAYING

- Thorough initial cleaning is essential to ensure the tiles a long-lasting appearance over time. It should not be carried out until at least 4 to 5 days after laying and grouting but no later than 10 days afterwards.
- For washing, we advise you to use an acid-based product, diluted according to the instructions provided by the manufacturer. However, we advise against the use of products containing hydrofluoric acid or derivatives thereof.
- It is a good idea to use a piece of unlaied tile, or a hidden part of the laid tiles, to check the resistance of the ceramic surface to the acid. This applies in particular when laying honed or polished tiles.

- When you start washing, it is worthwhile soaking the tiled surface first of all, focusing in particular on the joints. The acid solution must be left to work for no more than two minutes and must never be left to dry.
- To remove the acid solution, one of the following methods should be used: single-brush machine equipped with a non-abrasive disc, a wet vacuum, or washing by hand. After removing the solution, we recommend you rinse the tiled surface thoroughly.
- In the event that machines are used, we suggest that you finish off the job by hand in the harder to reach spots, such as the corners of the walls.



ORDINARY CLEANING AND CARE OF SURFACES

- For ordinary cleaning, simply wash with warm water and cloths and/or soft sponges. If necessary, neutral detergents can also be used. If you have non-neutral detergents, remember to test their effects on a piece of an unlaied tile or on a hidden part of the tiled surface.
- Abrasive cleaners should not be used on glossy and/or polished tiles; this kind of detergent can be used on tiles with matt surfaces though: in the event, you should still test the effects on a piece of an unlaied tile or on a hidden part of the tiled surface.
- We also advise against the use of soaps, waxes, or rinse aids.

- To remove traces of grease or oil on the surfaces, we suggest you use detergents with organic or alkaline solvents (pH > 9), rinsing properly at the end.
- In large areas, appropriate industrial washer-dryers can be used, taking care to finish off drying by hand where necessary.
- Abrasive tools (such as metal pads or rigid brushes) should not be used on tiled surfaces.
- After installation of the floor, it should be properly covered with suitable material in order to prevent tiles from damage or scratches because of on-site processing. It is also important not to drag heavy objects across the surface to avoid scratches.

CORPORATE OFFICE & BRANCHES

DISPLAY CENTRE & OFFICE

GUJARAT

AGL Display Centre - Ahmedabad
AGL Luxury Tile Arcade
S.G. Highway, Nr. Gota Cross Road,
Beside Gota over bridge, Ahmedabad - 382481.
Mobile: 98258 03713 / 99099 29920
E-mail: asianworld.amd@aglasiangranito.com

AGL Export House - Morbi
Ch-5, Eden Ceramic City,
Opp.Honest Hotel, National Highway,
Lalpar Road Morbi - 363642.
Mobile: 99799 90591
E-mail: exportmorbi@aglasiangranito.com

AGL Showroom
Future Ceramic Private Limited
Servey No.-84P1, 84P2, 85/1, 85/2P1, 85/2P2
B/h Harikrupa Papers LLP,
8-A NH, At Post Gala - Morbi -363642
Mobile: 93166 32661
E-mail: display@futureceramic.co.in

Factory Display Centre - Morbi
(Sanitaryware & Faucets)
AGL Sanitaryware Pvt. Ltd.
Survey No. 153 P1, 153 P2, 154 P2, 8A National
Highway, B/h. Bahadurgadh Bus Stand,
At. Bahadurgadh, Morbi-363642. Gujarat, India.
Mobile: 93166 32908
E-mail: export34@aglasiangranito.com

MAHARASHTRA

AGL Display Centre - Mumbai
A- 402, Citi Point, Nr. kohinoor Hotel,
Opp. ICICI Bank, J.B. Nagar,
Chakala Metro Station, Andheri (East),
Mumbai - 400 059. Mobile: 93214 95229
E-mail: mumbaishowroom@aglasiangranito.com

AGL Display Centre - Mumbai
(Marblex & Grestek)
Gala Impecca, Gr. Floor, Mathuradas VasANJI Rd,
Next to Caurtyard Marriott, J. B. Nagar,
Kurla-Andheri Road, Andheri (East) - 400059
Mobile : 7600098595

AGL Display Centre - Pune
Capital Square, 1st & 2nd floor, Plot No.5,
Nr. Laxminarayan Sweets, Industrial Estate,
Mukund Nagar, Pune - 411037 Maharashtra.
Mobile : 93717 65505

TELANGANA

AGL Display Centre - Hyderabad
202 2nd Floor & 302 3rd Floor, Kurve Elite,
Plot No. 58, Phase-1, Kamala Puri Colony Main Rd,
Opp. Krishe Medows, Hyderabad-500073
Mobile: 99099 90434, 96420 11146
E-mail: hydshowroom1@aglasiangranito.com,
hydshowroom@aglasiangranito.com

TAMILNADU

AGL Display Centre - Chennai
Bascon Futura SV IT Park, 2nd Floor, 56-L,
Venkatanarayana Rd, Parthasarathi Puram,
T. Nagar, Chennai - 600017, Tamil Nadu
Mobile: 98408 47193 / 99406 00262

KARNATAKA

AGL Display Centre - Bangalore
Asian Granito India Ltd., Region Office
No. 37/17, 31/18, Brahmananda Court, Opp.
R Kannada News Channel, S.R. Nagar, Lalbagh
main road, Bangalore - 560027. Karnataka
Mobile: 81605 21204
E-mail: bangloreshowroom@aglasiangranito.com

KERALA

AGL Display Centre - Kochi
No.51/2910 D2 Adjacent To Bread World,
Thykoodam Bridge Service Road,
Vytila Kochi - 682019
Mobile: 78618 09641
E-mail: cochinshowroom@aglasiangranito.com

WEST BENGAL

AGL Display Centre - Kolkata
5th Floor, Office No. 5A, PS SOLARIS Building,
113/H, Opp. Flaming Hospital. Matheswartala Rd.
Topsia. Kolkata 7000046.
Mobile: 85840 65565
E-mail: kolkattashowroom@aglasiangranito.com

UTTAR PRADESH

AGL Display Centre - Noida
F-15, Ground Floor, Sector 8,
Gautam Buddha Nagar,
Noida - 201301 Uttar Pradesh
Mobile: 85111 30500 / 98258 03736
E-mail: noidashowroom@aglasiangranito.com



Scan for
360° Tour

OFFICE

GUJARAT

Corp. Office - Ahmedabad
ASIAN GRANITO INDIA LTD.
202, Dev Arc, Opp. Iskcon Temple,
S. G. Highway, Ahmedabad - 380 015
Gujarat (INDIA)
Phone: +91 79 66125500/698
Toll Free: 1800 123 3455
E-mail: info@aglasiangranito.com

AGL Office - Morbi
B - 26, Parshwanath Complex-1
Opp. kuber Cinema, 8-A National Highway,
Lalpar Road, Morbi - 363642.
Mobile: 9825802077
E-mail: aglmorbi@aglasiangranito.com

RAJASTHAN

AGL Office - Jaipur
Lower Ground, D-5, Vaishali Nagar,
Jaipur, Rajasthan - 302021
Mobile: 80085 03660 / 93144 39930

MADHYA PRADESH

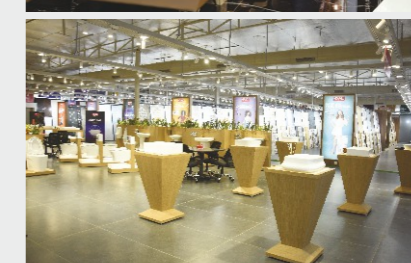
AGL Office - Indore
3rd Floor, Plot No 101, WB Scheme No. 94,
Sector - B, Opp. HDFC Bank,
Nr. Bombay Hospital, Indore - MP - 452010
Mobile: 99092 62533 / 73140 06670
E-mail: acctsindore@aglasiangranito.com

TAMIL NADU

AGL Office - Trichy
No.9, First Floor, Ranga Towers, Royal Road
Cantonment, Trichy - 620001
Mobile: 99406 00262

PUNJAB

AGL Office - Chandigarh
CCC Chandigarh City Centre, Block A 3rd Floor,
Soho 325, Vip Road, Near Metro Zirakpur,
Chandigarh Punjab-140603
Mobile : 93163 13880 / 99882 22471





Asian Granito India Ltd.

Regd. & Corp. Office
202, Dev Arc, Opp. Iskcon Temple, S.G. Highway,
Ahmedabad - 380 015, Gujarat, INDIA.

Phone: +91 79 66125500/698 | Fax: +91 79 66125600/66058672
CIN: L17110GJ1995PLC027025

E-mail: info@aglasiangranito.com | Web: www.aglasiangranito.com



1800 123 3455
Toll-free: Mon-Sat 10am-6pm

ONE SCAN AWAY TO EXPLORE MORE ABOUT US



SCAN CODE TO
DOWNLOAD
AGL TILES APP



SCAN CODE TO
DOWNLOAD
CATALOGUE



SCAN TO FIND
EXCLUSIVE
STORE