



Hyus  Ora
COLLECTION

The text "Hyus Ora" is displayed in a large, elegant serif font. The letter "O" in "Ora" is replaced by a large, dark grey circular graphic that overlaps the "y" and "a". Below "Hyus Ora", the word "COLLECTION" is written in a smaller, all-caps, sans-serif font.

Introducing HYUSORA Collection

Let Hyusora be the visual echo of
YOUR INNER WORLD

Inspired from Hues and Aura each Hyusora shade possesses an unseen yet profound presence, transforming any space into a sanctuary of soft light and emotional resonance. It cultivates an atmosphere of calm, wonder, and quiet connection, inviting you to **experience feelings** that are deeply felt even if they aren't always visible

Size: 600x1200mm

No. of Shades	No. of Textures	No. of Sku's
12	02	24

Designed Exclusive for
'GRESTEK' Segment



HyusOra
COLLECTION





HYUSORA BLISS

HYUSORA GLOW

HYUSORA HUSH

HYUSORA LUSH

HYUSORA DRIFT

HYUSORA EASE

HYUSORA CALM

HYUSORA SERENITY

HYUSORA MUSE

HYUSORA HOPE

HYUSORA CHARM

HYUSORA WHIMSY

Hyusora Sicura

Where Emotion Meets Precision

When elevated by digital print, the surface became an expressive canvas where each hue seamlessly interacted with the embedded pigments beneath. This subtle interplay between internal coloration and printed detail gave rise to a visual harmony marked by smooth transitions, enriched depth, and an enduring glow that felt both modern and timeless. Under the visionary umbrella of Hyusora, Sicura transcended the idea of a mere surface finish. It evoked an emotion a quiet assurance, a composed elegance, a beauty securely rooted from within.

Welcome to the Hyusora collection. Where Sicura isn't just a surface it's a pigment-deep promise, defined by precision and resonant with emotion.

GRITECH

Gritech is An advanced Micro Grits Surface Technology, setting new standards for matt surfaces. This innovative technology ensures a True Matt Finish with exceptional clarity and depth, while delivering ultra durability. The precision of Gritech enhances the surface's performance, making it ideal for both aesthetic appeal and long-lasting strength.

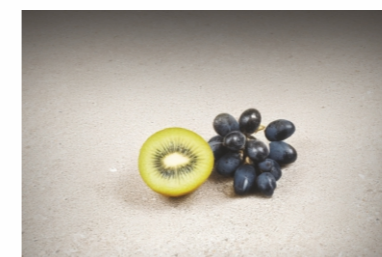


WATER RESISTANT

It prevents the absorption of liquids and the accumulation of odours thanks to its low porosity.

SCRATCH AND IMPACT RESISTANT

High tolerance to energy from impacts and cutting tools used on the surface.

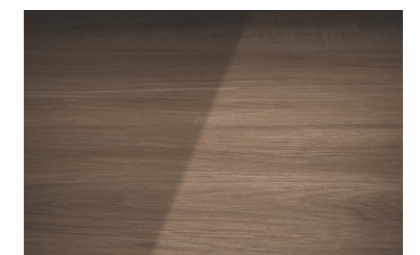


HYGIENIC

Low emission of volatile organic compounds, allowing direct contact with foodstuffs.

UV RESISTANT

Unalterable by ultraviolet rays, it remains stable against wear and tear due to strong illumination.





ABRASION RESISTANT

High durability and good resistance to wear and tear and scratches from daily use.

STAIN PROTECTION

Hydro and oil repellent antibacterial waterproofing that improves resistance against humidity chemical agents and stains.



FIRE RESISTANT

Fireproof and non-combustible, it maintains its aspect and performance when exposed to high temperatures.

EASY TO CLEAN

The use of specific products is unnecessary thanks to the zero-effort care of the material.



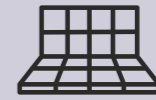
FROST RESISTANT

Stable to sudden temperature changes, it withstands extreme cold conditions.

APPLICATION AREAS -



Residential
(Living Room, Bedroom, Kitchen)



Indoor Area



Commercial Spaces



Bathroom



Mall Flooring



Offices



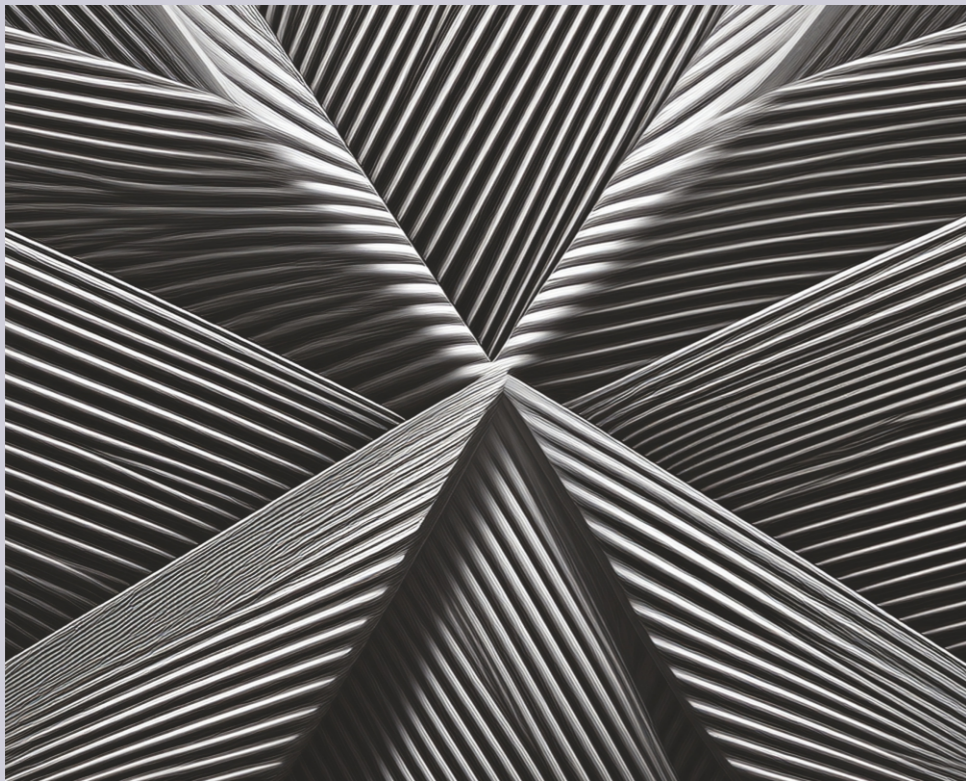
Balcony



School & University

Trivibe Texture

The Geometry of Emotion



When light touched Trivibe, it danced. Shadows shifted, and depth came alive. It created a feeling of energy, motion, and balance three elements that defined its essence. Architects called it kinetic calm. Designers saw it as structured boldness. Spaces transformed under its influence. A texture with three points of impact form, function, and feeling.

Linoir Texture

The Art of Linear Mystery



Linoir is the art of linear mystery a texture where structured lines meet shadowed depth, creating a refined calm and quiet strength. Inspired by flowing rhythms and dark-toned elegance, Linoir reveals more than texture; it reveals mood a serene depth, a sophisticated tone, a quiet intensity that shifts with the light. Bold yet subtle, it brings a modern classic presence that transforms spaces into atmospheres.



Linoir
 Texture



Bliss

Charm

Glow

Hush

Lush

Whimsy

Linoir is the art of linear mystery a texture where structured lines meet shadowed depth, creating a refined calm and quiet strength. Inspired by flowing rhythms and dark-toned elegance, Linoir reveals more than texture; it reveals mood a serene depth, a sophisticated tone, a quiet intensity that shifts with the light. Bold yet subtle, it brings a modern classic presence that transforms spaces into atmospheres.



Random-12



Hyusora Bliss
Linoir Texture



Hyusora Charm
Linoir Texture



Hyusora Glow
Linoir Texture

Random-12



Hyusora Bliss



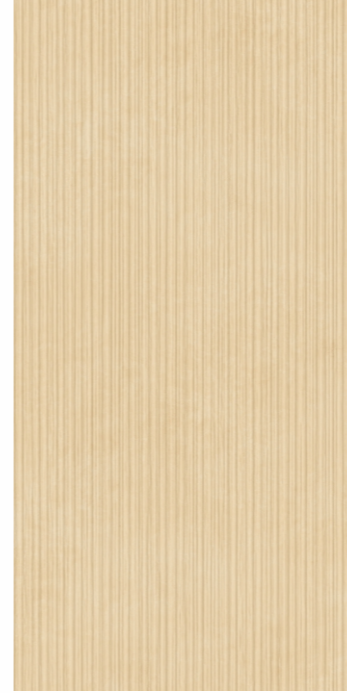
Hyusora Charm



Hyusora Glow



Random-12



Hyusora Hush
Linoir Texture



Hyusora Lush
Linoir Texture



Hyusora Whimsy
Linoir Texture

Random-12



Hyusora Hush
Linoir Texture



Hyusora Lush
Linoir Texture



Hyusora Whimsy
Linoir Texture



Trivibe Texture



Calm

Drift

Ease

Hope

Muse

Serenity

Trivibe is a dynamic texture where triangular geometry meets expressive design, creating a sense of energy, motion, and balance. When light touches its surface, it dances shadows shift, depth awakens, and space transforms. Architects call it kinetic calm; designers, structured boldness. With three points of impact form, function, and feeling Trivibe becomes more than a texture; it's the geometry of emotion.



Random-12



Hyusora Calm
Trivibe Texture



Hyusora Drift
Trivibe Texture



Hyusora Ease
Trivibe Texture

Random-12



Hyusora Calm



Hyusora Drift



Hyusora Ease



Random-12



Hyusora Hope Trivibe Texture



Hyusora Muse Trivibe Texture



Hyusora Serenity Trivibe Texture

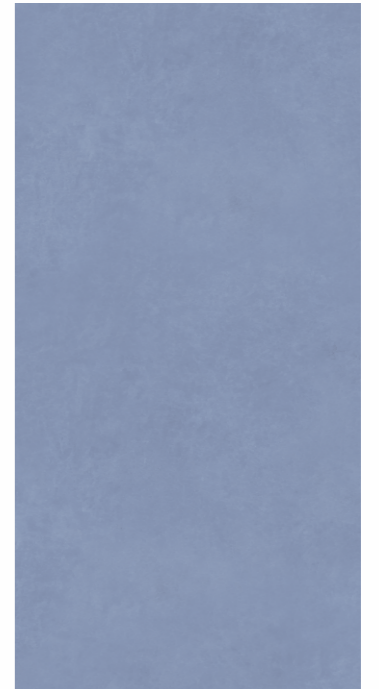
Random-12



Hyusora Hope



Hyusora Muse



Hyusora Serenity

HyusOra
COLLECTION

FRESCO
RIZON
COLLECTION

SERIES

● HYUSORA

● RUG

● MOROCCAN

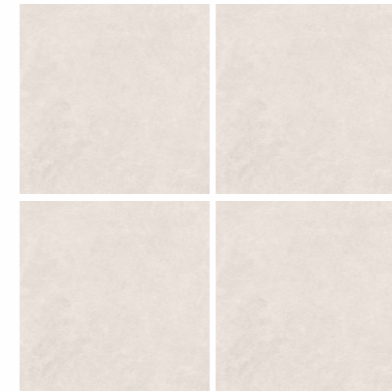
A bold collaboration: Fresco Rizon, a 200x200mm exclusive design crafted not just to complete the collection, but to elevate it. Compact yet commanding, it offered a level of detail and character that redefined accent design. More than a tile, it was a tool of freedom allowing architects and designers to break patterns, define zones, or create seamless stories within larger compositions. Whether used as a quiet contrast or a bold highlight, Fresco Rizon became the brush stroke that completed Hyusora's canvas. Together, they offered not just a surface, but a new dimension of creativity.

Size : 200x200mm

Surface : Matt

Effects : MT Granules | GL Granules | Carving

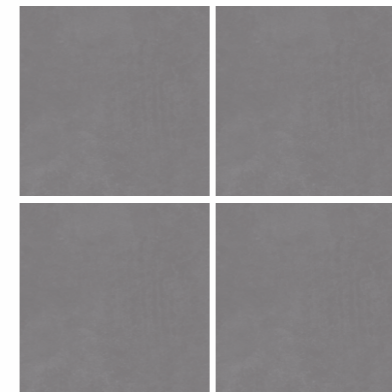




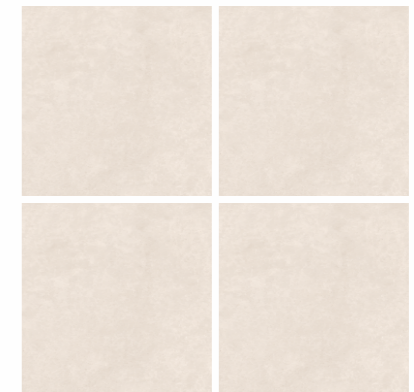
Hyusora Bliss



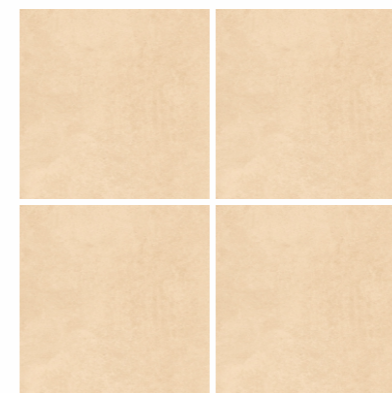
Hyusora Calm



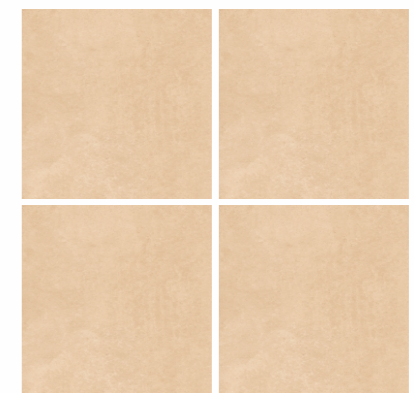
Hyusora Drift



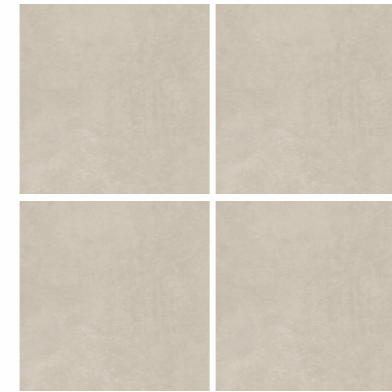
Hyusora Glow



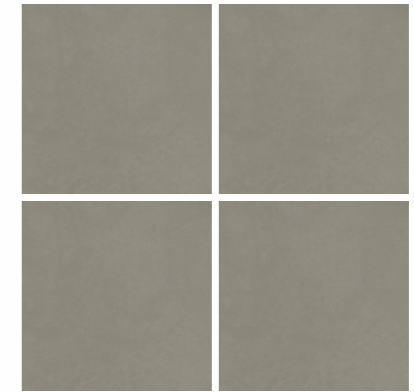
Hyusora Hush



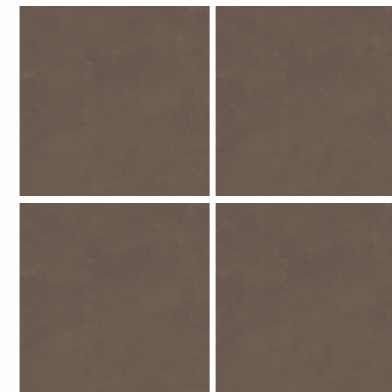
Hyusora Ease



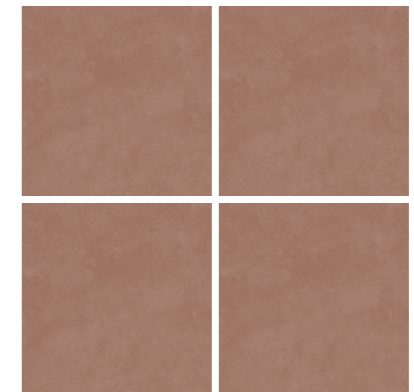
Hyusora Lush



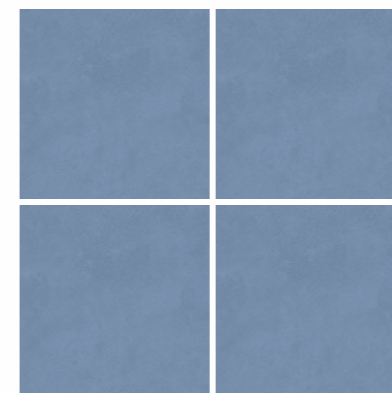
Hyusora Hope



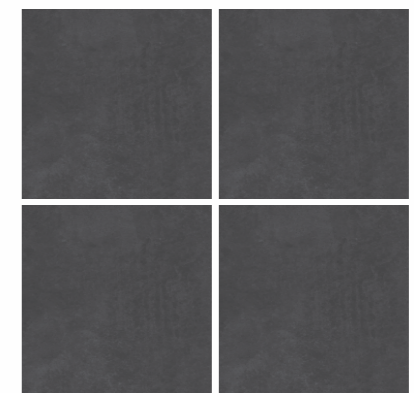
Hyusora Whimsy



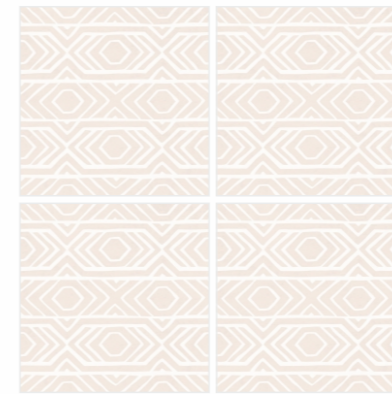
Hyusora Muse



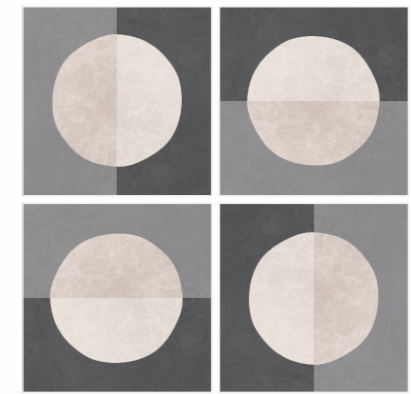
Hyusora Serenity



Hyusora Charm



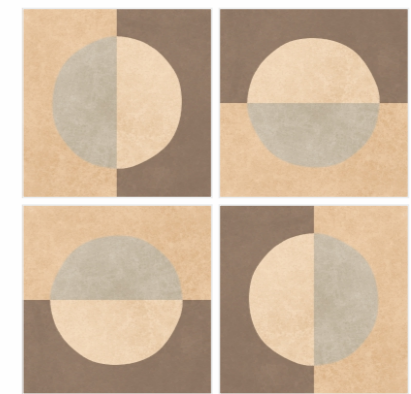
African Ivor (Glossy Granules)



Sphere Classic (Glossy Granules)



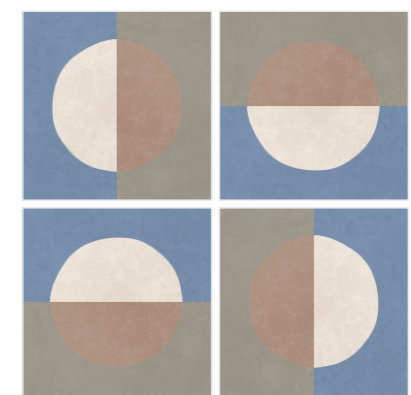
African Sage (Glossy Granules)



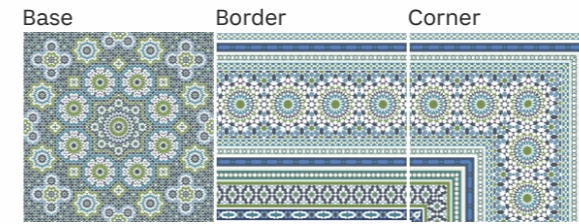
Sphere Heritage (Glossy Granules)



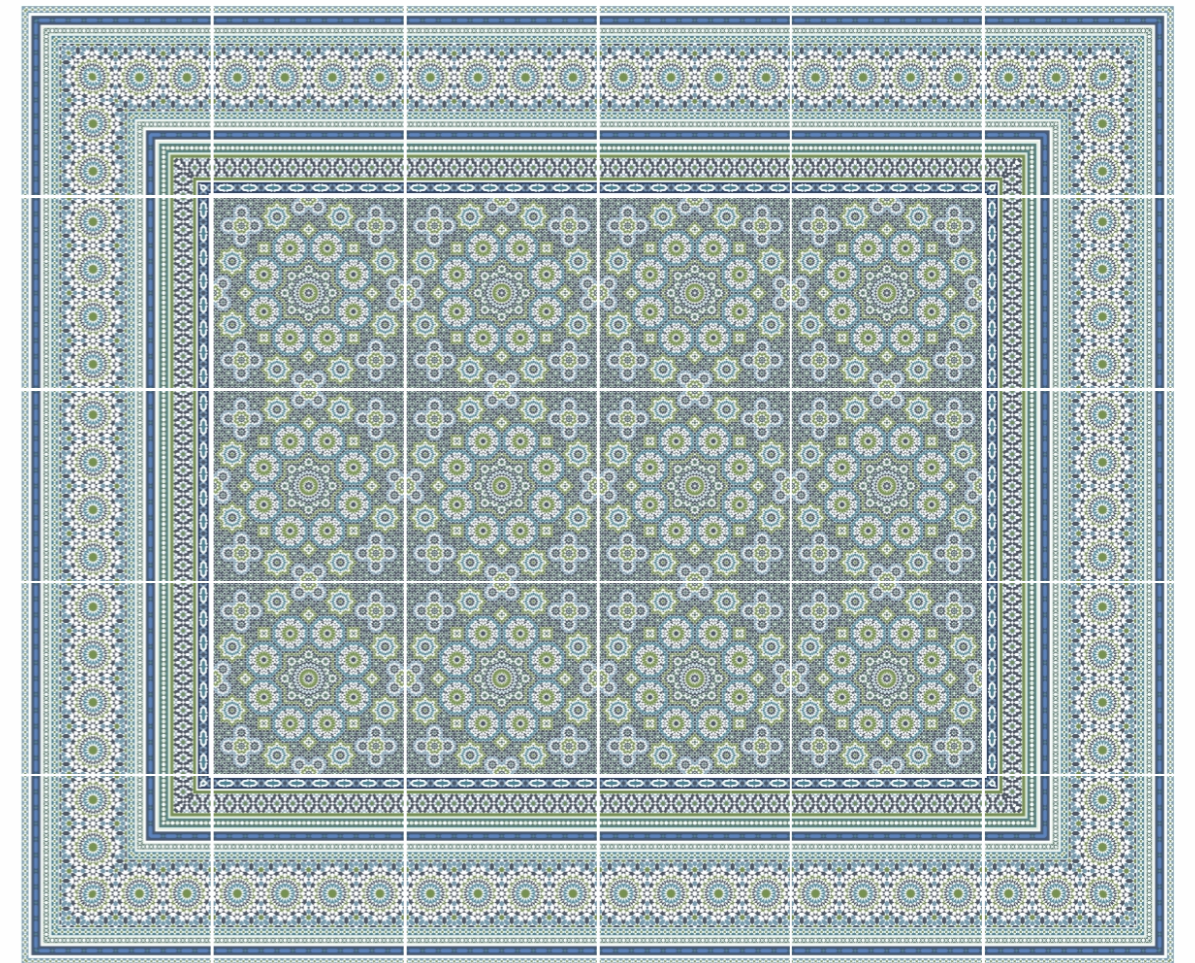
African Myst (Glossy Granules)

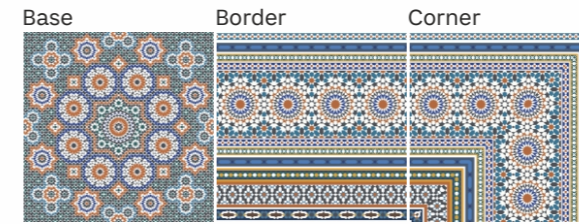


Sphere Morden (Glossy Granules)

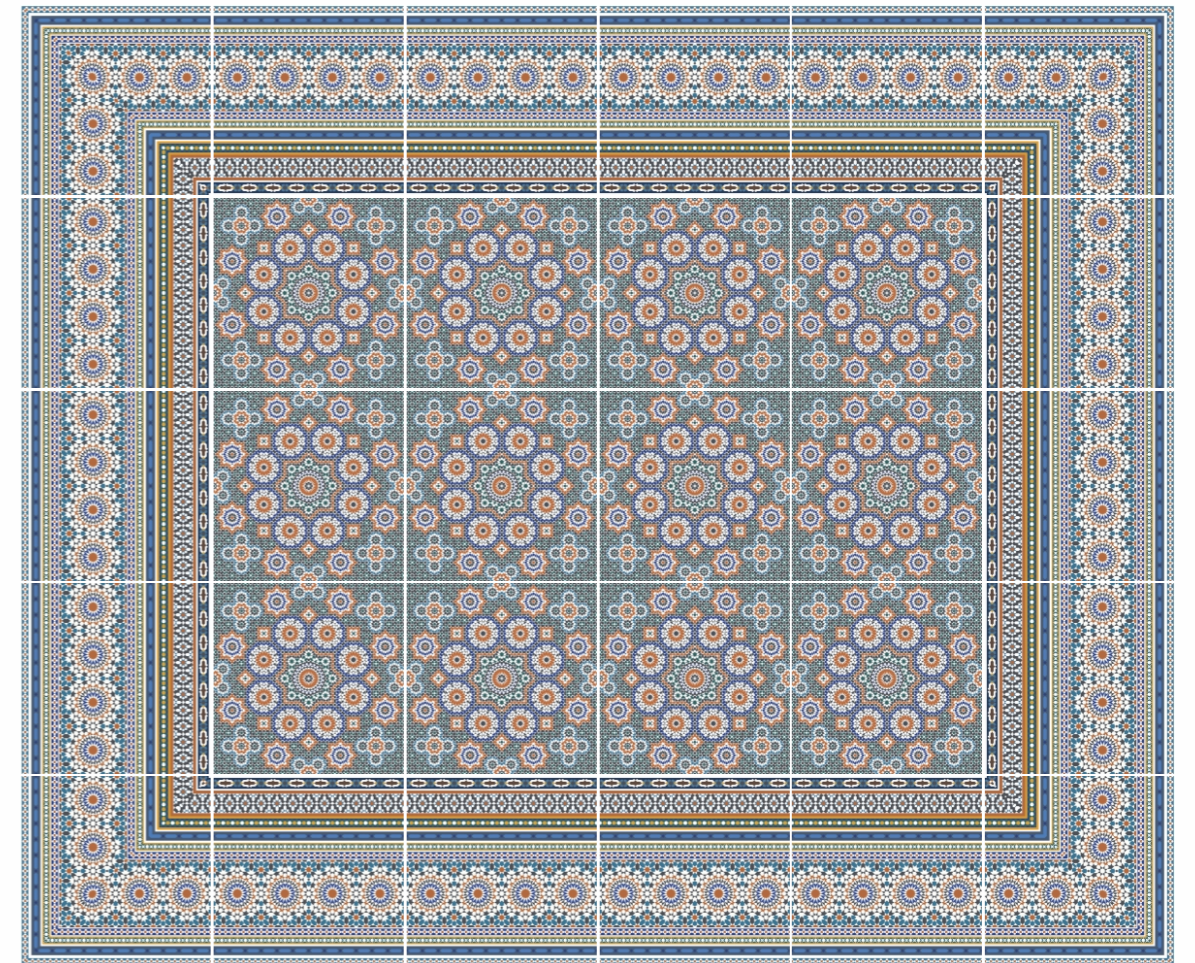


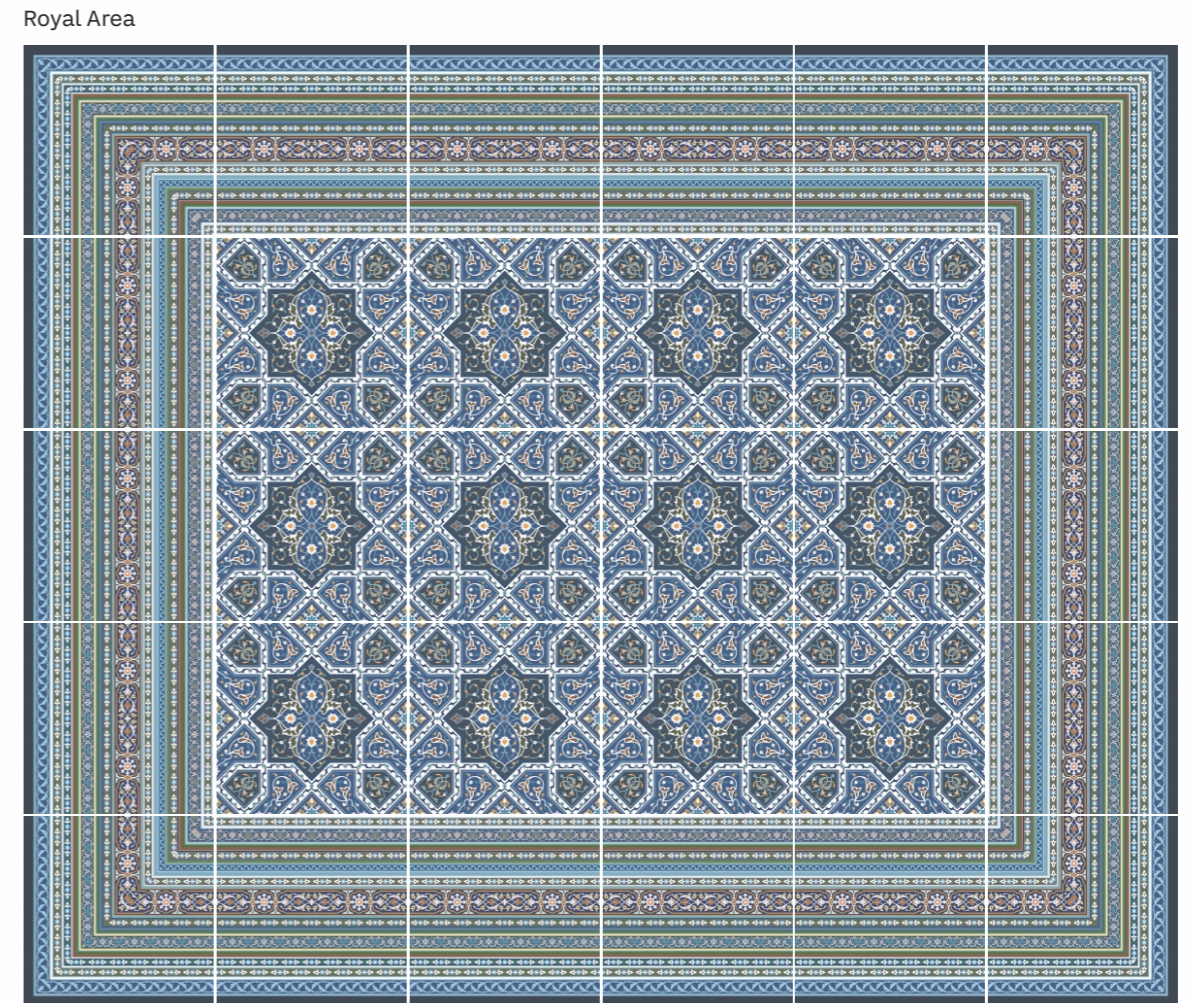
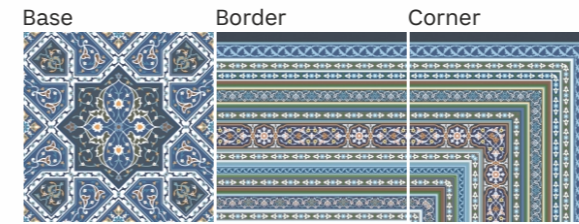
Caliph Pearl (Carving)





Caliph Gem (Carving)



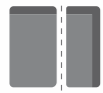




HANDLING

- To prevent breakage, we recommended to keep all Large Format Tiles in their original packaging during handling.
- Tiles measuring 60x120cm or less can be handled by hand.
- To handle Large Format Tiles, we recommend to use lifting tools with a sufficient load capacity.
- The use of forklift is recommended; however, it has to be equipped with following fork details:

- Minimum length of 1.2 m if the crates are handled resting on the long side.
- Minimum length of 2.1 m if the crates are handled resting on the short side.
- It is recommended that you handle the Frame individually.



CUTTING

- When cutting Large Format Tiles, we recommend to use professional dry cutters. Using other tools may lead to uneven cuts or breakage of the material.

It is recommended to check the cutter blade before any cut. A damaged blade increases the risk of damage.



BLACKGROUND / BASE / SCREED

- Prepare a screed with a perfectly flat, dry, compact, dust-free surface, with no cracks or other visible damage. The ideal height difference should be no more than 3 mm, measured using a 2 m spirit level.
- In case of slightly cracked or non-solid screed, it is recommended to use as crack preventing mat between substrate & slab. Screed should have suitable

hardness and mechanical resistance to stresses due to the final uses. It should be prepared using perimeter bands & all structural expansion joints as necessary.

- It should be according to BS 8204-1-2003 or DIN 18560 standards.



LAYING WITH ADHESIVES

- We recommend laying with this technique, which should be carried out by suitably qualified workers with appropriate equipment.
- While choosing the adhesive, we recommend you to bear in mind the following: type of Large Format Tiles (group to which they belong and size), type of surface to be tiled and intended use of room.
- Adhesive should be applied on the floor as well as on backside of tiles with 3-4 mm thickness.
- To make corrections, we recommend you to check the material before the adhesive dries.
- Adhesive will vary depending on the surface so follow manufacturer recommendation. Cementitious Adhesive (C2 Category - C2TES1) is recommended.
- Apply the adhesive onto the back of the slab with a 3 mm trowel and should be well distributed on corners & edges.

- It must be spread over in one direction only. Ideally it should be spread towards shortest direction of the tile.
- Spread the adhesive for one tile (pc) onto the floor substrate using a 15mm U-notch or a 10mm V-notch trowel and following the same direction as previously applied to the back of the slab. Adhesive should have 100% contact with tiles/substrate to avoid hollow sounding.
- It is recommended to start from the centre of the slabs and then move towards the edges.
- Tap the slab with a rubber mallet for a complete fixing ensuring the air is expelled.
- It is recommended to handle slabs with appropriate equipment.



JOINTS

- Deciding where to position the joints is also a part of the work which should be entrusted to qualified workers.
- The joints must be positioned:
 - On structural connections (structural joints)
 - Between the wall and the floor (perimeter joints)
 - Between one tile and another (laying joints or gaps)
 - Between tiles and other materials (e.g. pairings between ceramic, linoleum, or wood).

- A 2 mm joint spacer is suggested for all sizes.
- For Large Format Tiles, a 2 mm joint is strongly recommended, as well as proper positioning of spacers on floor sides.



USE OF TILE LEVELLING SYSTEM DURING THE INSTALLATION

- For optimum surface performances, it is strongly recommended to use a tile levelling system.

- This solution also acts as a spacer for joints, thus contributing to make the installation more accurate.



GROUTING

- We recommend you to use grout with the same colour as the product.
- We recommend you to wait for the adhesive to dry completely before grouting the joints.
- We also advise you to ensure there is no adhesive or dust in the joints.
- Apply the grout using rubber trowel.
- Both cement & epoxy grout can be used. It is not recommended to use grouting with coloured pigments in contrast with colour of tiles.
- We recommend you to grout no more than 4-5 square metres of tiling at a time. This applies in particular when laying textured, non-slip and polished tiles.

- You are advised to remove all excess grout from the tile surface while the grout is still wet, working in diagonal movements. This applies in particular to tiles laid in outdoor areas.
- Use a damp sponge and perfectly clean water to thoroughly clean the entire tiled surface and the joints.
- We then recommend that you dry the surface with a damp cloth.
- Considering how quickly epoxy grouts set, if these are used, we recommend you to clean the excess grout immediately with a sponge and plenty of water.
- On the day after grouting, you should give the laid tiles a second cleaning with alkaline detergents.



CLEANING AFTER LAYING

- Thorough initial cleaning is essential to ensure the tiles a long-lasting appearance over time. It should not be carried out until at least 4 to 5 days after laying and grouting but no later than 10 days afterwards.
- For washing, we advise you to use an acid-based product, diluted according to the instructions provided by the manufacturer. However, we advise against the use of products containing hydrofluoric acid or derivatives thereof.
- It is a good idea to use a piece of unlaied tile, or a hidden part of the laid tiles, to check the resistance of the ceramic surface to the acid. This applies in particular when laying honed or polished tiles.

- When you start washing, it is worthwhile soaking the tiled surface first of all, focusing in particular on the joints. The acid solution must be left to work for no more than two minutes and must never be left to dry.
- To remove the acid solution, one of the following methods should be used: single-brush machine equipped with a non-abrasive disc, a wet vacuum, or washing by hand. After removing the solution, we recommend you rinse the tiled surface thoroughly.
- In the event that machines are used, we suggest that you finish off the job by hand in the harder to reach spots, such as the corners of the walls.



ORDINARY CLEANING AND CARE OF SURFACES

- For ordinary cleaning, simply wash with warm water and cloths and/or soft sponges. If necessary, neutral detergents can also be used. If you have non-neutral detergents, remember to test their effects on a piece of an unlaied tile or on a hidden part of the tiled surface.
- Abrasive cleaners should not be used on glossy and/or polished tiles; this kind of detergent can be used on tiles with matt surfaces though: in the event, you should still test the effects on a piece of an unlaied tile or on a hidden part of the tiled surface.
- We also advise against the use of soaps, waxes, or rinse aids.

- To remove traces of grease or oil on the surfaces, we suggest you use detergents with organic or alkaline solvents (pH > 9), rinsing properly at the end.
- In large areas, appropriate industrial washer-dryers can be used, taking care to finish off drying by hand where necessary.
- Abrasive tools (such as metal pads or rigid brushes) should not be used on tiled surfaces.
- After installation of the floor, it should be properly covered with suitable material in order to prevent tiles from damage or scratches because of on-site processing. It is also important not to drag heavy objects across the surface to avoid scratches.

Fresco Rizon Collection | 200x200mm

CHARACTERISTICS	MINIMUM REQUIREMENT ISO / IS	AGL VALUE	Test Method ISO / IS
-----------------	------------------------------	-----------	----------------------

(A) DIMENSION & SURFACE QUALITY

Deviation In Length & Width	± 0.3% , ± 1.0mm / ± 0.1%	± 0.1%	ISO 10545 Part-2 IS 13630 Part-1
Deviation In Thickness	± 5.0% , ± 0.5mm / ± 5.0%	± 1.10%	ISO 10545 Part-2 IS 13630 Part-1
Straightness of Edge (Length & Width)	± 0.3% , ± 0.8mm / ± 0.1% , ± 0.1%	± 0.03% , ± 0.05%	ISO 10545 Part-2 IS 13630 Part-1
Rectangularity (Length & Width)	± 0.3% , ± 1.5mm / ± 0.1% , ± 0.1%	± 0.04% , ± 0.06%	ISO 10545 Part-2 IS 13630 Part-1
Surface Flatness (Length & Width)	± 0.4% , ± 1.8mm / ± 0.5% , ± 0.5%	± 0.04% , ± 0.02%	ISO 10545 Part-2 IS 13630 Part-1
Surface Quality	Min. 95% of Tiles shall be free from visible defects that would impair the appearance of a major area of the tiles	Min. 95% of Tiles shall be free from visible defects that would impair the appearance of a major area of the tiles	ISO 10545 Part-2 IS 13630 Part-1

(B) PHYSICAL & THERMAL PROPERTIES

Water Absorption % By Wt.	≤ 0.5, Ind. 0.6 Max. / ≤ 0.08, Ind. 0.1 Max.	< 0.05%	ISO 10545 Part-3 IS 13630 Part-2
Flexural Strength (MOR) In N/mm ²	Avr. 35, Ind. Min. 32	> 47.21 N/mm ²	ISO 10545 Part-4 IS 13630 Part-6
Breaking Strength in N	1300 N Min.	> 1788N	ISO 10545 Part-4 IS 13630 Part-6
Bulk Density (gm/cc)	2.0 Min. / 2.2 Min.	> 2.33	ISO 10545 Part-3 IS 13630 Part-2
Impact Resistance	> 0.40 / > 0.55	> 0.84	ISO 10545 Part-5 IS 13630 Part-14
Resistance to Surface Abrasion	Manufacturer to State Class / PEI II Min.	PEI III Min. (1500 RPM Pass)	ISO 10545 Part-7 IS 13630 Part-11
Co-efficient of Liner Thermal Expansion from ambient temp to 100°C (K ²)	9x10-6 Max. / 6x10-6 Max.	≤ 6x10-6	ISO 10545 Part-8 IS 13630 Part-4
Thermal Shock Resistance	10 Cycles Min.	No Damage after 10 Cycles	ISO 10545 Part-9 IS 13630 Part-5
Moisture Expansion in mm/M	Test Method Available / 0.02 Max.	0.002 mm/m	ISO 10545 Part-10 IS 13630 Part-3
Crazeing Resistance	Min. 2 Cycle / 4 Cycles at 7.5 bar Min.	No Damage after 4 Cycle at 7.5 bar Min.	ISO 10545 Part-11 IS 13630 Part-9
Frost Resistance	Resistance	Resistance	ISO 10545 Part-12 IS 13630 Part-10
Moh'S Scratch Hardness	Min. 5	Min. 8	EN 101 IS 13630 Part-13

(C) CHEMICAL PROPERTIES

Resistance To Household Chemicals	Min. Class B / Min. Class AA	GAA	ISO 10545 Part-13 IS 13630 Part-8
Resistance To Acids & Alkalis (Except HF Acid)	Teat Method Available / Min. Class AA	GAA	ISO 10545 Part-13 IS 13630 Part-8
Stain Resistance Green Stain in Light Oil, Red Stain in Light Oil, Aiodine, 13g/L in Alcohol, Olive Oil	Min. Class 3 / Min. Class 1	Min. Class 5	ISO 10545 Part-14 IS 13630 Part-8
Swimming Pool Salt : Sodium Hypochorita soln 12mg/Ltr	Min. Class B / Required, if agreed according to the chemical resistance class indicated by the manufacturer	GA	ISO 10545 Part-14 IS 13630 Part-8

Packing Specification

Size (mm)	Thickness (mm)	No. of Tiles / Set	Area Sq. mtr. / Box
600x1200mm	8.5 mm	02 pcs.	1.44m ² / 15.5 sq.ft

Characteristics	Verdict	Requirement as per IS 15622:2017 Gr Bla E ≤ 0.08%	AGL Value	Test Method
-----------------	---------	---	-----------	-------------

(A) DIMENSION & SURFACE QUALITY

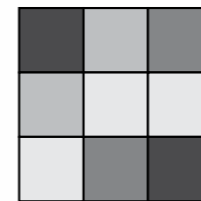
Deviation In Length & Width	PASSED	± 0.1%	± 0.1%	IS 13630 Part-1
Deviation In Thickness	PASSED	± 5.0%	± 3.0%	
Straightness of Edge	PASSED	± 0.1%	± 0.1%	
Rectangularity	PASSED	± 0.1%	± 0.1%	
Surface Flatness	PASSED	± 0.5%	± 0.20%	
Surface Quality	PASSED	Min 95% free from visible defects	> 95% free from visible defects	

(B) PHYSICAL & THERMAL PROPERTIES

Water Absorption % By Wt.	PASSED	0.08 <E ≤ 3%	< 3.0%	IS 13630 Part-2
Flexural Strength (MOR) In N/mm ²	PASSED	Avr.30 N/MM ² Ind 27 N/MM ²	>27N/MM ²	IS 13630 Part-6
Breaking Strength in N	PASSED	Min 1100 N	>1200 N	IS 13630 Part-6
Bulk Density (gm/cc)	PASSED	Min. 2.0	>2.0	IS 13630 Part-2
Impact Resistance	PASSED	0.55 Min	0.55	IS 13630 Part-14
Resistance to Surface Abrasion	PASSED	Class II Min.	Class III Min.	IS 13630 Part-7
Thermal Shock Resistance	PASSED	10 Cycles Min.	Passed 10 Cycles	IS 13630 Part-5
Moisture Expansion in mm/M	PASSED	0.02MM/M	Nil	IS 13630 Part-3
Crazeing Resistance	PASSED	4 Cycles at 7.5 bar Min.	Passed The Test	IS 13630 Part-9
Frost Resistance	PASSED	Resistance	Resistance	IS 13630 Part-10
Mohs Scratch Hardness	PASSED	Min. 5	Min. 5	IS 13630 Part-13

(C) CHEMICAL PROPERTIES

Resistance To Household Chemicals	PASSED	Min. Class AA	Class AA	IS 13630 Part-8
Resistance To Acids & Alkalis (Except HF Acid)	PASSED	Min. Class AA	Class AA	
Stain Resistance	PASSED	Min. Class 1	Class - 1	



Kindly note that variations in colour and size are natural characteristics of vitrified tiles, resulting from the random design concept and vitrification process. These should not be regarded as manufacturing defects. It is highly recommended to inspect actual tile samples prior to making a final selection. A 2 mm gap must be maintained during installation, and a dry mock installation is advised to ensure precision. Post-installation claims will not be accepted. Catalogue or Digital visuals, product sizes, and colours are indicative and subject to change without prior notice. We take pride in being part of your space and are dedicated to your lasting satisfaction.

DEGREE OF
COLOUR CHANGE

HIGH SHADE AND TEXTURE VARIATION
WITHIN EACH CARTON

CORPORATE OFFICE & BRANCHES

DISPLAY CENTRE & OFFICE

GUJARAT

■ **Display Centre - Ahmedabad**
AGL Luxury Tile Arcade
S.G. Highway, Nr. Gota Cross Road,
Beside Gota over bridge, Ahmedabad - 382481.
Mobile: 98258 03713 / 99099 29920
E-mail: asianworld.amd@aglasiangranito.com

■ **AGL Export House - Morbi**
Ch-5, Eden Ceramic City,
Opp.Honest Hotel, National Highway,
Lalpar Road Morbi - 363642.
Mobile: 99799 90591
E-mail: exportmorbi@aglasiangranito.com

■ **AGL Showroom**
Future Ceramic Private Limited
Servey No.-84P1, 84P2, 85/1, 85/2P1, 85/2P2
B/h Harikrupa Papers LLP,
8-A NH, At Post Gala - Morbi -363642
Mobile: 93166 32661
E-mail: display@futureceramic.co.in

■ **Factory Display Centre - Morbi**
(Sanitaryware & Faucets)
AGL Sanitaryware Pvt. Ltd.
Survey No. 153 P1, 153 P2, 154 P2, 8A National
Highway, B/h. Bahadurgadh Bus Stand,
At. Bahadurgadh, Morbi-363642. Gujarat, India.
Mobile: 93166 32908
E-mail: export34@aglasiangranito.com

MAHARASHTRA

■ **AGL Display Centre - Mumbai**
A- 402, Citi Point, Nr. kohinoor Hotel,
Opp. ICICI Bank, J.B. Nagar,
Chakala Metro Station, Andheri (East),
Mumbai - 400 059. Mobile: 93214 95229
E-mail: mumbaishowroom@aglasiangranito.com

■ **AGL Display Centre - Mumbai**
(Marblex & Grestek)
Gala Impecca, Gr. Floor, Mathuradas VasANJI Rd,
Next to Cauryard Marriott, J. B. Nagar,
Kurla-Andheri Road, Andheri (East) - 400059
Mobile : 7600098595

■ **AGL Display Centre - Pune**
Capital Square, 1st & 2nd floor, Plot No.5,
Nr. Laxminarayan Sweets, Industrial Estate,
Mukund Nagar, Pune - 411037 Maharashtra.
Mobile : 93717 65505

TELANGANA

■ **AGL Display Centre - Hyderabad**
202 2nd Floor & 302 3rd Floor, Kurve Elite,
Plot No. 58, Phase-1, Kamala Puri Colony Main Rd,
Opp. Krishe Medows, Hyderabad-500073
Mobile: 99099 90434, 96420 11146
E-mail: hydshowroom1@aglasiangranito.com,
hydshowroom@aglasiangranito.com

TAMILNADU

■ **AGL Display Centre - Chennai**
Bascon Futura SV IT Park, 2nd Floor, 56-L,
Venkatanarayana Rd, Parthasarathi Puram,
T. Nagar, Chennai - 600017, Tamil Nadu
Mobile: 98408 47193 / 99406 00262

KARNATAKA

■ **AGL Display Centre - Bangalore**
Asian Granito India Ltd., Region Office
No. 37/17, 31/18, Brahmananda Court, Opp.
R Kannada News Channel, S.R. Nagar, Lalbagh
main road, Bangalore - 560027. Karnataka
Mobile: 81605 21204
E-mail: bangloreshowroom@aglasiangranito.com

KERALA

■ **AGL Display Centre - Kochi**
No.51/2910 D2 Adjacent To Bread World,
Thykoodam Bridge Service Road,
Vytila Kochi - 682019
Mobile: 78618 09641
E-mail: cochinshowroom@aglasiangranito.com

WEST BENGAL

■ **AGL Display Centre - Kolkata**
5th Floor, Office No. 5A, PS SOLARIS Building,
113/H, Opp. Flaming Hospital. Matheswartala Rd.
Topsia. Kolkata 7000046.
Mobile: 85840 65565
E-mail: kolkattashowroom@aglasiangranito.com

UTTAR PRADESH

■ **AGL Display Centre - Noida**
F-15, Ground Floor, Sector 8,
Gautam Buddha Nagar,
Noida - 201301 Uttar Pradesh
Mobile: 85111 30500 / 98258 03736
E-mail: noidashowroom@aglasiangranito.com



Scan for
360° Tour

OFFICE

GUJARAT

■ **Corp. Office - Ahmedabad**
ASIAN GRANITO INDIA LTD.
202, Dev Arc, Opp. Iskcon Temple,
S. G. Highway, Ahmedabad - 380 015
Gujarat (INDIA)
Phone: +91 79 66125500/698
Toll Free: 1800 123 3455
E-mail: info@aglasiangranito.com

■ **AGL Office - Morbi**
B - 26, Parshwanath Complex-1
Opp. kuber Cinema, 8-A National Highway,
Lalpar Road, Morbi - 363642.
Mobile: 9825802077
E-mail: aglmorbi@aglasiangranito.com

RAJASTHAN

■ **AGL Office - Jaipur**
Lower Ground, D-5, Vaishali Nagar,
Jaipur, Rajasthan - 302021
Mobile: 80085 03660 / 93144 39930

MADHYA PRADESH

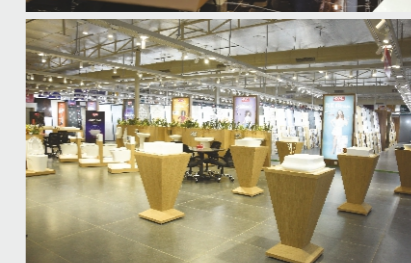
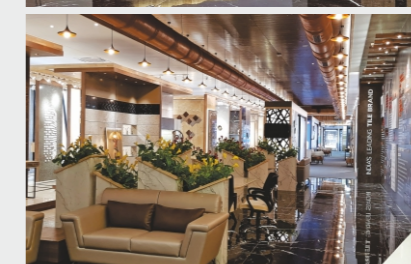
■ **AGL Office - Indore**
3rd Floor, Plot No 101, WB Scheme No. 94,
Sector - B, Opp. HDFC Bank,
Nr. Bombay Hospital, Indore - MP - 452010
Mobile: 99092 62533 / 73140 06670
E-mail: acctsindore@aglasiangranito.com

TAMIL NADU

■ **AGL Office - Trichy**
No.9, First Floor, Ranga Towers, Royal Road
Cantonment, Trichy - 620001
Mobile: 99406 00262

PUNJAB

■ **AGL Office - Chandigarh**
CCC Chandigarh City Centre, Block A 3rd Floor,
Soho 325, Vip Road, Near Metro Zirakpur,
Chandigarh Punjab-140603
Mobile : 93163 13880 / 99882 22471





Asian Granito India Ltd.

Regd. & Corp. Office
202, Dev Arc, Opp. Iskcon Temple, S.G. Highway,
Ahmedabad - 380 015, Gujarat, INDIA.

Phone: +91 79 66125500/698 | Fax: +91 79 66125600/66058672
CIN: L17110GJ1995PLC027025

E-mail: info@aglasiangranito.com | Web: www.aglasiangranito.com



 **1800 123 3455**
Toll-free: Mon-Sat 10am-6pm

ONE SCAN AWAY TO EXPLORE MORE ABOUT US



SCAN CODE TO
DOWNLOAD
AGL TILES APP



SCAN CODE TO
DOWNLOAD
CATALOGUE



SCAN TO FIND
EXCLUSIVE
STORE